



BWNCWS Y BANNAU

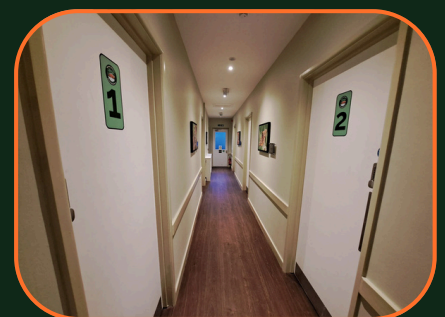
MODERN, SPACIOUS, AFFORDABLE GROUP
ACCOMMODATION IN THE HEART OF CARMARTHENSHIRE



KITCHEN



COMMUNAL AREA



ACCOMADATION

The Adventure starts here! Whether you're looking for a comfortable group stay, an affordable outdoor retreat, or a base for exploring Bannau Brycheiniog (The Brecon Beacons) and South Wales, Bwncws y Bannau is the perfect choice.



**Glanaman
a Garnant**

Where great Welsh adventures begin.

BWNCWS Y BANNAU

Welcome to Bwncws y Bannau, a newly renovated 28-bed bunkhouse sleeping up to 31 guests, located in Glanamau, Carmarthenshire, at the gateway to Bannau Brycheiniog (The Brecon Beacons).

Designed for schools, outdoor groups, Duke of Edinburgh expeditions, team-building retreats, and large family gatherings, our facility provides comfortable, modern, and affordable group accommodation in a stunning natural setting.



WHY CHOOSE BWNCWS Y BANNAU?

✓ **Modern & Spacious Facilities**

Newly refurbished to offer a comfortable stay for large groups.

✓ **Ideal Location**

Situated in Eastern Carmarthenshire, close to Bannau Brycheiniog (Brecon Beacons) National Park, outdoor activity centres, and local attractions. The bunkhouse is within walking distance of local amenities and bus routes.

✓ **Designed for Groups**

Tailored to meet the needs of schools, youth organisations, outdoor activity providers, team-building groups, and large families.

✓ **Affordable & Accessible**

Cost-effective accommodation with accessible facilities, including a disabled bedroom and wet room.

✓ **Perfect for Outdoor Adventures**

Featuring a drying room for drying and storing equipment and ample secure parking for minibuses and vans, making it ideal for hiking, cycling, and activity groups.

WHO CAN USE BWNCWS Y BANNAU?

Bwncws y Bannau is designed to meet the needs of a wide range of groups, including:

Schools & Educational Groups

Perfect for outdoor learning experiences, field trips, and Duke of Edinburgh expeditions.

Outdoor Pursuits & Adventure Organisations

An ideal base for hiking, cycling, climbing, and water-based activities in the Brecon Beacons.

Team-Building & Corporate Retreats

A great space for organisations, charities, and clubs looking to develop skills and team dynamics.

Large Families & Group Holidays

A cost-effective and comfortable accommodation option for family reunions, celebrations, and getaways.

Youth Clubs & Community Groups

A great space for overnight stays, workshops, and weekend retreats. The large communal space and modern kitchen allow groups to come together in a safe and welcoming environment.

TV & Film Production Companies

Looking for crew accommodation while filming in Carmarthenshire? Bwncws y Bannau offers a cost-effective, spacious, and well-equipped base for film and TV crews working in the area.

Wedding Groups & Guests

Ideal for wedding parties looking for cost-effective group accommodation. Whether you're attending a wedding nearby or planning a budget-friendly group stay for guests, our bunkhouse provides a modern, comfortable space for larger groups.

The Local Cwmaman Community

Our bunkhouse is a resource for the local community, providing a space for events, group stays, and local initiatives.

Children's Sleepover Parties

A fun, safe, and spacious environment for birthday parties and group activities.

FACILITIES & ACCOMMODATION

Bwnaws y Bannau offers:

COMMUNAL SPACES

- Large communal area with comfortable sofas, a pool table, flat-screen TV, and dining facilities.
- Fully equipped modern kitchen with ample cooking and storage space, perfect for group catering.
- Drying Room accessible from both inside and outside, ensuring outdoor equipment can be stored securely.
- Large entrance hallway with seating and visitor information.



SLEEPING ARRANGEMENTS



Our six bedrooms provide flexible accommodation for a range of group sizes:

- Bedroom 1 & 3 – 1 triple bunk (single over double) + 2 single bunks = sleeps 7 (if double is shared).
- Bedroom 2, 4 & 6 – 2 single bunk beds = sleeps 4 per room.
- Bedroom 5 (Accessible Room) – Spacious room for wheelchair access, with an external door to the rear for convenience.



FACILITIES & ACCOMMODATION

Bwnews y Bannau offers:

MODERN BATHROOM FACILITIES

- Multiple modern shower rooms and toilets, designed for high-capacity group use.
- Dedicated accessible shower room, providing step-free access for guests with mobility needs.
- Hot water and powerful showers to accommodate large groups comfortably.
- Well-maintained, clean, and spacious facilities, ensuring a comfortable stay for all guests.



OUTDOOR FACILITIES



- Ample secure parking at the rear of the bunkhouse.
- Modern outdoor dining area, perfect for meals and group activities.
- Bike hire available for guests to explore local cycle routes.

ACCESSIBILITY

- Fully accessible bedroom with ample wheelchair space and private access.
- Accessible shower room with level-entry shower.
- Step-free access throughout key areas of the bunkhouse.



PRICING

GROUP BOOKING RATES (20 OR MORE GUESTS)

Booking Type	Per person per night	Per Person per week (7 days)
Bring Your own Bedding	18.50	122.50
Bedding supplied	25.00	126.00

INDIVIDUAL BOOKING RATES

Booking Type	Per person per night	Per Person per week (7 days)
Bring Your own Bedding	22.50	140.00
Bedding supplied	25.00	157.50

PRIVATE ROOM RATES

Ideal for families, small groups, or those who prefer not to share with others.

Booking Type	Private 4-Bed Room (Sleeps up to 4) - per night	Private 6-Bed Room (Sleeps up to 7) - per night
Bring Your own Bedding	£90.00	£125.00
Bedding supplied	£100.00	£140.00

EXCLUSIVE USE OF THE BUNKHOUSE

For hire of the entire bunkhouse, ideal for schools, large groups, or event organisers:

Booking Type	Cost Per Night
Bring Your own Bedding	£90.00
Bedding supplied	£100.00

NEARBY ATTRACTIONS & TRAVEL TIMES

Bwnaws y Bannau is ideally located near some of the best attractions in South Wales, perfect for outdoor activities, heritage sites, and adventure tourism.

OUTDOOR & ADVENTURE ATTRACTIONS

Amman Valley Riverside Walk (5 mins)

A 7-mile scenic cycling and walking trail along the River Amman.

Brecon Beacons National Park (10 mins)

Home to waterfalls, hiking trails, and breathtaking scenery.

Llyn Llech Owain Country Park (20 mins)

A beautiful nature reserve with walking trails and a lake.

Outdoor Pursuits & Activity Centres (20–40 mins)

Including caving, climbing, kayaking, and more.

CASTLES & HERITAGE SITES

Carreg Cennen Castle (15 mins)

One of Wales' most iconic castles with breathtaking views.

Dinefwr Castle & Park (25 mins)

A historic estate with a National Trust-managed deer park.

Llansteffan Castle (50 mins)

A hidden gem with stunning coastal views.

Dylan Thomas Boathouse, Laugharne (45 mins)

A must-visit for literature and poetry lovers.

WILDLIFE & COASTAL ATTRACTIONS

WWT Llanelli Wetland Centre (40 mins)

A haven for birdwatching and wetland conservation.

Millennium Coastal Path, Llanelli (45 mins)

A stunning coastal cycling and walking route.

Gower Peninsula (1 hr)

Award-winning beaches, dramatic cliffs, and stunning coastal hikes.

Pembrokeshire Coast National Park (1 hr 30 mins)

A paradise for nature lovers and adventure seekers.

HOW TO FIND US

Address: Bwncws y Bannau, Glanamau, Carmarthenshire, SA18 1LQ

By Road:

From Swansea (30 mins) – Take the A483 north towards Ammanford, then follow the A474 to Garnant.

From Cardiff (1 hr 15 mins) – Take the M4 west to Junction 49, then follow the A483 to Ammanford and the A474 to Garnant.

From Brecon (1 hr) – Take the A40 towards Llandovery, then follow the A4069 towards Brynamman and Garnant.


 By Train:

The nearest train station is Ammanford (15 mins drive), with regular services from Swansea and Shrewsbury.

Taxis and local bus services are available from the station to Garnant.

 By Bus:




Bus services connect Ammanford, Llanelli, and Swansea to Garnant via the 129 First Cymru bus route.

 GPS Coordinates: 51°48'22"N 3°55'18"W


PARTNERSHIP OPPORTUNITIES

We are looking to collaborate with schools, outdoor activity providers, Duke of Edinburgh coordinators, corporate teams, and tourism partners.

If your organisation would like to:

-  Book our facilities for your group
-  Display your promotional materials in our bunkhouse
-  Feature Bwncws y Bannau in your marketing materials


We would love to hear from you!

 Contact us today to discuss how we can work together.

BOOKING & CONTACT INFORMATION

Available for bookings all year round

Contact us: Cwmaman Town Council, 5 High Steet, Glanamau SA18 1DX

 Phone: 01269 822 882

 Email: bookings@cwmmamantc.org

 Website: www.glanamangarnant.wales

For pricing queries, availability, and booking enquiries, please get in touch!