



# COMMUNITY STRONGER TOGETHER



## SERVING THE VILLAGES OF GARNANT AND GLANAMAN

# 2023-24

## ANNUAL REPORT





# TABLE OF CONTENTS

**WELCOME – FROM MAYOR MATTHEW WYATT**

**INFORMATION ABOUT US**

**YOUR COUNCILLORS**

**YOUR OFFICERS**

**WHAT YOUR TOWN COUNCIL DOES**

**WORKING TOGETHER FOR COMMUNITY WELLBEING**

**ACHIEVING THE 7 GOALS**

**YOUR CWMAMAN**

**FINANCIAL & EXPENDITURE**

**COMMUNITY ASSETS**

**ACTIVITIES AND INITIATIVES**

**ACHIEVEMENTS**

**CHALLENGES AND RESPONSES**

**FUTURE OUTLOOK**

**FOLLOW US ON SOCIAL MEDIA**



**JOIN OUR MAILING LIST**





# INTRODUCTION

Welcome to the annual report of Cwmaman Town Council for the financial year ending 2024. This report is prepared in accordance with Section 52 of The Local Government and Elections (Wales) Act 2021, ensuring our commitment to transparency and accountability in serving the residents of Cwmaman.

This past year has been marked by significant changes and achievements, reflecting our dedication to enhancing community life while ensuring sound governance and management. We have welcomed new leadership with the appointments of a new Town Clerk and Deputy Clerk, who have brought fresh perspectives and renewed energy to our council operations. This transition has been supported by a restructured team that aims to optimize our service delivery and responsiveness to community needs.

Our council has been particularly active in hosting a series of low-cost or free community events designed to enrich the social fabric of Cwmaman and provide accessible leisure opportunities for all age groups. These events have not only fostered community spirit but have also been instrumental in promoting local engagement and participation.

A landmark project initiated this year is the development of a 28-bed bunkhouse, which promises to boost local tourism and provide a sustainable source of revenue for community projects. This facility is designed to accommodate visitors exploring the scenic beauty of our region, thereby contributing to the local economy and increasing our community's attractiveness as a destination.

This report details our priorities, activities, and accomplishments over the previous year and outlines our approach to overcoming challenges and seizing opportunities for growth and improvement. We aim to provide a comprehensive overview of our efforts and achievements, reinforcing our commitment to the well-being and prosperity of Cwmaman.





# WELCOME

From Matthew Wyatt, Mayor of Cwmaman 23-24

It gives me great pleasure to welcome the Cwmaman Town Council annual report.

As the Mayor of this wonderful village, I am honored to share with you the council's progress in promoting the wellbeing of our community and ensuring that future generations will continue to thrive in Cwmaman.



This report reflects the tireless efforts of our dedicated council officers, who have been working hard to develop and implement policies that prioritise the long-term health and prosperity of our community. From ensuring sustainable development to promoting environmental conservation, the council has been making great strides in securing a bright future for all who call Cwmaman home.

As we face challenges like climate change, economic uncertainty, and social inequality, it is crucial that we work together as a community to create a sustainable and equitable future. The council's report provides a roadmap for how we can achieve this goal, and I urge all residents to read it carefully and consider how we can contribute to its implementation.

I am proud of the work that has been done so far and look forward to continuing to work alongside the council and all residents to ensure that Cwmanan remains a vibrant and thriving community for generations to come.





# INFORMATION ABOUT US

Cwmaman Town Council serves the vibrant communities of Garnant and Glanamau, representing over 4500 residents. Established in 1974, our Council is committed to enhancing community life and maintaining transparent governance.

The Council is made up of 15 members that represent the community on a ward basis. These members make decisions on a range of services and activities which support the local community and liaise with Carmarthenshire Council when other issues of concern or interest arise.

Cwmaman Town Council has a range of responsibilities and powers that, depending on financial and other resources, enable the development and improvement of facilities and services for both residents and visitors. The Council:

- Collaborates with various organisations, community groups, and the community to ensure the best outcomes for our residents and the maintenance of services.
- Advocates on behalf of local residents, requesting that Carmarthenshire Council and other statutory bodies meet their duties and responsibilities in ways that satisfy the needs of Cwmaman residents.
- Is committed to the seven goals outlined in the Well-being of Future Generations Act (Wales) 2015, striving for sustainable development to improve economic, social, environmental, and cultural well-being, aiming for a Wales that is prosperous, resilient, healthier, more equal, cohesive, globally responsible, and culturally vibrant where the Welsh language prospers.
- Maintains and enhances the environment.
- Considers and responds to planning applications.
- Engages with consultations by statutory bodies at both national and local levels, always considering the impact on local residents.
- Applies for grants or sources of funding that support the vision and aims of the Town Council

The Council's work is supported by committees that meet to address specific matters. Each committee has defined terms of reference and membership approved by the Town Council and reviewed periodically.

Our committees include:

Park Assets and Environment Committee

Finance, Audit, and Projects Committee

Policy Committee

Personnel Committee/Appeals Committee





# INFORMATION ABOUT US

## Meetings

Council meetings are held monthly on the last Monday evening of each month. These hybrid meetings are conducted both in person at the Community Centre board room and remotely via Microsoft Teams.

The public is welcome to attend all meetings, with opportunities provided for public participation. Meetings will be closed to the public only when discussing confidential matters.

## Staffing

Cwmaman Town Council employs six officers, including:

Town Clerk: Louise Dent

Deputy Clerk/Responsible Financial Officer: Jayne Grazette

Events and Facilities Manager: Marissa Sweeney Aris

Facilities Officer: Jonathan Kemp

Administration and Communications Officer: Ian Llewelyn

Community Caretaker: Donal Bendrey

Additionally, we have two café supervisors and four casual café staff working across our two cafés.

The Town Clerk acts as the Chief Officer of the Council, managing the staff and addressing any council-related matters. Residents are encouraged to contact the Clerk for assistance and support.

## Accountability

The Town Council has adopted a Member's Code of Conduct and maintains a register of interests for each member.

Councillors must declare any interests at the start of each meeting, which are then recorded in the minutes.

The Town Council undergoes annual audits by internal auditors (KLG Services) and external auditors (Wales Audit Office) to ensure transparency and accountability.

## External Membership

The Town Council greatly benefits from its membership in

One Voice Wales, the main representative body for community and town councils in Wales. One Voice Wales provides legal advice, service improvement guidance, training, policy advice, and networking opportunities through conferences and monthly newsletters.

The Clerk and Deputy Clerk are members of the Society of Local Council Clerks (SLCC), which offers information, best practices, training courses, and conferences. Additionally, the Town Council elects members to other external bodies, such as the Governing Body of Ysgol Y Bedol.

## Website

Information about the Town Council, including meeting agendas, minutes, policies, and news, is available on our new website: [www.YourCwmamman.co.uk](http://www.YourCwmamman.co.uk).





# YOUR COUNCILLORS

In Wales, approximately 8,000 town and community councillors act on behalf of residents who elect them, serving as the voice of the people in shaping how public services are delivered and developed.

Cwmaman Town Council has 15 Councillors representing a range of political opinions. All Councillors are bound by a Code of Conduct and are expected to uphold the Nolan Principles of Public Life, which include:-



These principles guide our councillors in their commitment to serving you, ensuring a transparent and accountable local government.

# YOUR COUNCILLORS

Meet our team of councillors, your partners in building a stronger, more connected Cwmaman.

At Cwmaman Town Council, our strength lies in the commitment and passion of our councillors. These individuals are not just representatives; they are your neighbours, friends, and advocates, working tirelessly to make our community a better place for everyone.



**Cllr Kevin Madge**  
Labour



**Cllr David Jenkins**  
Plaid Cymru



**Cllr Vyvyan Radford Smith**  
Labour



**Cllr Emyr Rees**  
Independent



**Cllr Pauline Barker**  
Independent



**Cllr Matthew Wyatt**  
Labour  
Mayor



**Cllr Nigel Jerrett**  
Plaid Cymru



**Cllr Tony Jones**  
Labour  
Deputy Mayor



**Cllr. Ffion Lewis**  
Plaid Cymru



**Cllr. Ashley Butcher**  
Independent



**Cllr. David Williams**  
Labour



**Cllr Karen Davison**  
Labour



**Cllr Gordon Jones**  
Labour

\*At the time of this report's production, Cwmaman Town Council had two open Councillor seats to be filled.



# YOUR OFFICERS

Cwmaman Town Council has undergone a period of significant transformation with the formation of a new staffing team in 2023/24.

This change has marked a pivotal point for the Council, allowing us to enhance our operational capabilities and better serve the community. We have successfully developed a dedicated and dynamic team committed to improving the services offered by the Council.



Louise Dent  
Town Clerk



Jayne Grazzette  
Deputy Clerk/RFO



Marissa Sweeney Aris  
Events and Facilities  
manager



Jonathan Kemp  
Facilities Officer



Ian Llewelyn  
Administration and  
Communications  
Officer



Donal  
Bendrey  
Community  
Caretaker

**At the beginning of the year, our staff set forth to achieve several key objectives, demonstrating their dedication to the community's well-being and development:**

**Bringing the Community Together**

**Creating Core Memories for Local Families**

**Achieving Best Practice**

**Ensuring Clear and Transparent Governance**

**Serving the Community to the Best of Our Ability**

The formation of our new staffing team has been a significant milestone, and we are proud of the progress we have made. With a shared vision and collaborative spirit, we are poised to continue making positive strides in our service to the community.

# WHAT YOUR TOWN COUNCIL DOES...

As one of more than 730 Community Councils in Wales, Cwmaman Town Council is deeply rooted in its commitment to serving the community.

Here's a glimpse of what we do:

## COMMUNITY EMPOWERMENT

Through influence, enablement, and support, we actively encourage and assist community groups to thrive.

## QUALITY OF LIFE IMPROVEMENT

We strive to enhance the quality of life in our local community through various initiatives and projects.

## COMMUNITY EVENTS

Bringing neighbours, families and generations together, we organise a variety of community events, fostering a sense of unity and shared experiences among our residents.

## REPRESENTATION AND ADVOCACY

We stand as a voice for the local community, ensuring that the concerns and aspirations of our residents are heard and addressed.

## TAILORED SERVICES

With a keen understanding of local needs, we strive provide essential services that contribute to the well-being and vitality of our community.



# WHAT YOUR TOWN COUNCIL DOES...

We take pride in managing and overseeing various places and services that are integral to the fabric of our community.

Currently, these include:

- Cwmaman Community Centre
- Bwnaws y Bannau (formerly Glanamman Resource Centre)
- Neuadd Y Bannau (formerly the Community hall/Workshop)
- The Bowls Pavilion
- Caffi Y Pafiliwn Café
- Cwmaman Park
- Raven Park
- Bishops Road Park
- Penyrallt Park
- Maes y Bedol Park
- Twyn Park
- Gelli Werdd Play Park
- Penpound Park
- Tirycoed Park
- Grenig Park
- Bryn Rhos Park
- The Multi-Use Games Area
- Golwg Yr Aman Carpark (opposite Ysgol y Bedol)
- Public Convenience (Glanaman Square)

## AND WHAT WE DON'T DO.....

A town council is not responsible for the following:

- Roads/Highways/Planning
- Waste/Rubbish Collections
- Council Housing and Benefits
- Education and Schools

We are also not currently responsible for GelliWerdd country park and Parc Golwg yr Aman which are currently under the jurisdiction of Carmarthenshire County Council.

At Cwmaman Town Council, we continue to uphold the values set forth by Acts of the Senedd or the UK Parliament, ensuring that our community flourishes and remains a vibrant place to call home.

# WORKING TOGETHER FOR COMMUNITY WELLBEING:

## OUR PRIORITIES

**As a council, we are committed to following these principles  
in all our activities:**

### Equity and Accessibility

We strive to level the playing field for our residents in this rural community, ensuring they have access to opportunities and services comparable to those available in larger or metropolitan areas.

### Lifelong Support

We aim to play a supportive and motivational role throughout the lives of our residents, from birth to old age, ensuring their needs are met and acting as advocates when necessary.

### Vulnerable Support

We are dedicated to assisting and aiding the most vulnerable members of our community, ensuring they are supported in accessing services, achieving their potential, and living active, healthy, and fulfilling lives.

### Active Citizenship

We encourage all Cwmaman residents to become active citizens, applying their skills to benefit their fellow residents and enhance community life.

### Community Promotion

We aim to raise the profile of Cwmaman as a place of natural beauty with strong community bonds, embracing new technologies and innovation.

### Efficient Service Delivery

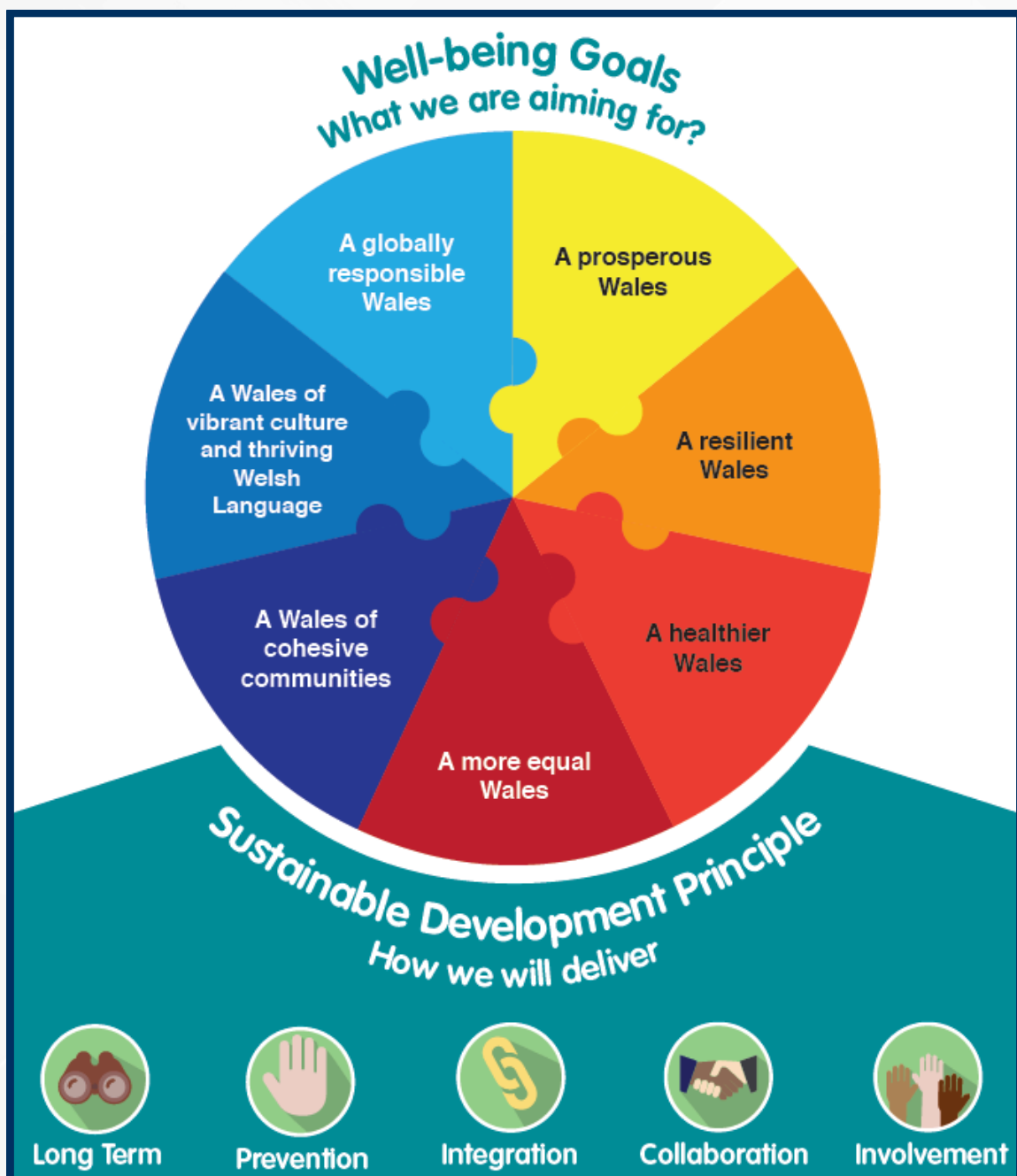
We are committed to delivering our statutory duties efficiently and effectively, while also providing non-statutory services to support our community's needs. Our long-term goal is to facilitate the delivery of these services through new or existing third sector organisations.



# WORKING TOGETHER FOR COMMUNITY WELLBEING:

## ACHIEVING THE 7 GOALS

The Well-being of Future Generations (Wales) Act 2015 is pioneering legislation designed to improve the social, economic, environmental, and cultural well-being of Wales. It places a duty on public bodies to work towards sustainable development and achieve seven well-being goals to ensure a better quality of life for current and future generations.



# ACHIEVING THE 7 GOALS

In alignment with the Well-being of Future Generations Act 2015, Cwmaman Town Council has strived to meet the seven well-being goals through various initiatives, projects, and policies.



A Prosperous Wales

In 2023/2024, Cwmaman Town Council responded to several requests for financial assistance, granting over £7,000 to groups and organisations that are making a positive difference in our community. These grants have supported local projects that enhance the quality of life for residents and promote local economic growth.



A Resilient Wales

Our commitment to environmental sustainability is reflected in our focus on reducing waste, promoting recycling, maximizing energy efficiency, and sourcing materials locally. We collaborate closely with Innovation for Nature Conservation Cymru, based in Cwmaman, to monitor and enhance biodiversity and conservation efforts within our community. Going forward, we plan to continue developing and enhancing our green spaces and parks to further support resilience and sustainability.



A More Equal Wales

We are dedicated to fostering an inclusive community through accessible events and services. The Cwmaman Community Centre offers a food pantry that provides low-cost food to the community and emergency food parcels to those in need. We actively engage with diverse groups to address social inequalities and ensure that all residents have the opportunity to participate in community life.



A Healthier Wales

Cwmaman Town Council has enhanced recreational facilities to promote health and well-being. Cwmaman Park offers a Multi-Use Games Area (MUGA) and a bowling green. The Pafiliwn Café, located in the park, provides a welcoming space for walkers and cyclists, and hosts various activities that promote physical and mental well-being. Our Community Centre is a dynamic hub offering a range of activities such as Tai Chi, exercise classes for the over 60s, and other health-focused events.



A Wales of Cohesive Communities

Strong community engagement is at the heart of our efforts at Cwmaman Town Council. We actively organise a diverse array of community events, clubs, and classes catering to all age groups. These initiatives are meticulously crafted to unite residents, fostering stronger community ties and collaboration. Our "Community Fridays" initiative serves as a central point for residents to access essential services, further enhancing community cohesion and mutual support.



A Wales of Vibrant Culture & Thriving Welsh Language

Cwmaman Town Council actively promotes Welsh culture and language through our Welsh Language Usage Policy. We provide bilingual services, support Welsh language events, and encourage the use of Welsh in all council activities. Our commitment to cultural vibrancy is also evident in our support for local arts and heritage projects, which celebrate and preserve the rich cultural history of Cwmaman.



A Globally Responsible Wales

We implement sustainable practices in all our operations, as outlined in our Environmental Policy. This includes reducing energy consumption, minimizing waste, and promoting recycling. We also encourage the use of sustainable transport options and the responsible management of natural resources. Through these efforts, we aim to contribute to global sustainability goals while enhancing the local environment.



# FINANCE AND EXPENDITURE

## FINANCIAL SUMMARY 2023/2024

The Council Precept is the main source of Council income and represents the amount of council tax paid by households in Cwmaman that is allocated to the Town Council. Town and community councils receive 6% of the overall council tax demand.

The annual precept £230.71 (per Band D household) raised a total of £369,116.00 for the Town Council during 2023/24 (the Town Council does not receive anything from business rates).

It also received income from the provision of its services such as:

○ Grant applications: £190,196

● Community café: £14,349

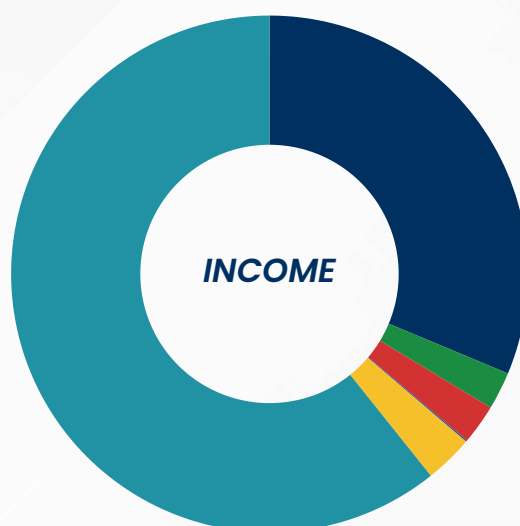
● Caffi Y Pavilion: £15,180

● Multi use games area: £550

● Community Centre: £18,385

● Precept £369,116

Other income received was £27,235.00 giving total income for 2023/24 of £635,011.00



During 2023/24 Council expenditure (including staffing costs) was:

● Community Parks – £19,207.00

● Christmas Lighting – £13,304.00

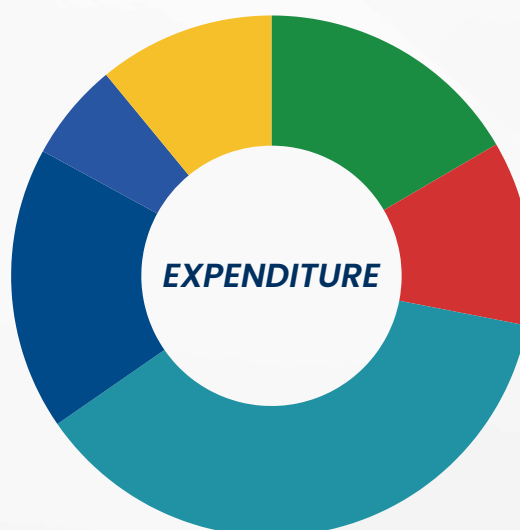
● Community Centre – £43,215.00

● Community Cafe's – £20,368.00

● Community Grants – £7,069.00

● Community Events – £12,691.00

Other expenditure (including staffing costs) was £522,292.00 giving total expenditure for 2023/24 of £638,146.00



The Council retains unearmarked reserves of £121.120 to deal with unforeseen contingencies and emergencies.

# FINANCE AND EXPENDITURE

## SMALL GRANTS AND DONATIONS

At Cwmaman Town Council, we are committed to supporting projects that contribute positively to our community. Through our Grant Awarding Policy, we provide financial assistance to community organisations and individuals who are dedicated to enhancing the quality of life, improving our environment, providing essential services, and promoting Cwmaman in positive and impactful ways.

Our goal is to ensure that both community groups and individuals have the support they need to make significant contributions to our community and beyond.

In 2023-24, we donated a total of £7,069 to support community groups, community projects and third sectors supporting our residents.

Organisation	Date	Amount
Cwmaman Senior Citizens Branch	July 2023	£300
Community attendance at the World dance Championship	July 2023	£100
Shadows Depression Group	July 2023	£430
Glo Man Newspaper	July 2023	£150
Cerebral Palsy Cymru	July 2023	£100
Urdd Gobaith Cymru in East Carmarthenshire	Sept 23	£125
Shadows Depression Group	Oct 2023	£3,068
Cwmaman United Football club	Oct 2023	£1,996
PTA of Ysgol y Bedol	Nov 2023	£700
Carmarthenshire young farmers	Jan 2024	£50
Marie Curie	Mar 2024	£50

In 2024-25 applications will be invited biannually, specifically in June and November.

All interested parties are encouraged to express their interest by contacting the Clerk to the Council at [clerk@cwmamantc.org](mailto:clerk@cwmamantc.org) who will provide preliminary information and application forms.

# YOUR CWMAMAN

## THE VILLAGES OF GARNANT AND GLANAMAN – OUR HISTORY

Cwmaman is a community in east Carmarthenshire comprising the two neighbouring villages of Garnant and Glanamman. Cwmaman's modern semi-rural landscape disguises the impact of the industrial revolution. A once remote and sparsely populated agricultural area underwent a dramatic transformation in the mid-18th century with the advent of coal mining at Brynllloi in Glanamman in 1757. Small coal workings proliferated in the first half of the 19th century.

*(THE ORIGINAL BRYNLLLOI FARM AT GLANAMMAN, PICTURED ABOVE, IS SAID TO HAVE DATED BACK TO AT LEAST 1494 AND WAS USED AS A RELIGIOUS MEETING PLACE FOR WORSHIP AS EARLY AS 1727. IN THE LATE 18TH CENTURY, A SUNDAY SCHOOL WAS HELD THERE. IT WAS DEMOLISHED IN 1906)*



*(GELLI CEIDRIM COLLIERY C.1910)*

But everything changed with the arrival of the "Llanelli Railway" in 1840. It meant that coal could be exported on an industrial scale through Llanelli docks. The company's decision to build two stations at Garnant and Glanamman encouraged the two halves of Cwmaman to develop their own identities.

Taking its name from the emblem of the Dynevor family the Raven Colliery in Garnant was operating by 1854 and opened a new shaft in 1907. By World War I, it was employing 450 men. The Raven colliery eventually closed in 1936 and the site is now the Raven Industrial Park. Half a mile to the west another large colliery dominated the southern hillside – the Gellyceidrim Number 1 slant, opened in 1891. At its peak in 1926, 750 men were employed at the colliery, and it had an output of 500 tons a day. The mine finally closed in 1957. Coal mining continued sporadically since then, most notably at an open cast mine which extracted 2,000 tons per week between 1988 and 1992. The site is now the popular Garnant Park Golf Club.

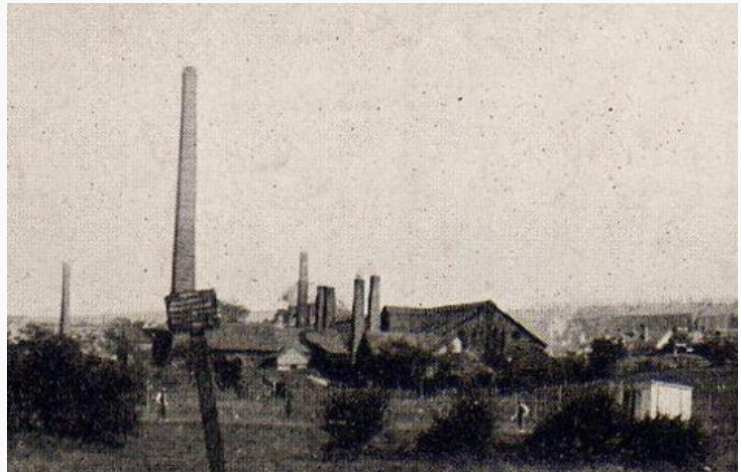


# YOUR CWMAMAN

## THE VILLAGES OF GARNANT AND GLANAMAN – OUR HISTORY

### ECONOMY

Traditionally the economy was based on coalmining with some dairy farming, but the mines have closed, and farms have moved from milk production to beef-farming. Other industries sprang up in the valley during the 19th century, including the Amman Tinsplate Works between 1883 and 1932 which was turned into Parc Golwg Yr Aman.



### CULTURE



In towns and villages across industrial south Wales, where industrial and agricultural societies were so close, and traditional Welsh culture so dynamic, the outpouring of cultural activity in all forms was remarkable; in terms of literature, poetry, song, music and theatre. Cwmaman was no different.

Cwmaman's many chapels were ready stages for organised events, with local eisteddfodau commonly held, but the homes and pubs of the district were also important platforms for such skills to be honed.

Across the Amman Valley, through the Sunday School and the Band of Hope (Gobeithlu) the chapels made a huge contribution to the cultural wealth of the district, giving excellent grounding for the choral tradition.

# YOUR CWMAMAN

## THE VILLAGES OF GARNANT AND GLANAMAN – OUR HISTORY

The Workmen's Hall and the Garnant Constitutional Club were both typical symbols of the social side of life in a traditional South Wales mining community.



*"THE NEW MOON" PERFORMANCE AT THE  
WORKMEN'S HALL, GARNANT IN MARCH 1957*

The Workmen's Hall was for many years a popular destination for live entertainment as well as a thriving cinema. It's huge stage area, one of the largest in Wales, attracted a wide range of performers including a travelling circus complete with an elephant and performing horses, the London Symphony Orchestra, the prestigious Ballet Rambert from Paris as well as a number of live radio broadcasts.

### SPORT

Sport also flourished in Cwmaman with rugby, football, cricket and boxing being followed by the growing population, helping to forge a community identity amongst families which had come to the Amman Valley from many parts of Wales, and beyond.



*AMMAN UNITED RUGBY TEAM (DATE UNKNOWN)*

Over the years many Welsh international rugby players have honed their skills playing for Amman United RFC before donning the red jersey of Wales. In recent years the most notable exponent of the game has been Shane Williams, a man who continues take great pride in his local community. Cwmaman United Football Club have also met with considerable success.



# YOUR CWMAMAN

## THE VILLAGES OF GARNANT AND GLANAMAN – OUR HISTORY

### EDUCATION

The community remains a stronghold of the Welsh language.

Three local schools, Ysgol y Twyn, Ysgol Gynradd y Garnant and Ysgol Gynradd Glanaman, were merged to form Ysgol y Bedol at the confluence of the three rivers in the Twyn area. This primary school for ages 2–11 was opened in 2005. Ysgol y Bedol is a category A, or Welsh medium



### RELIGIOUS SITES

As with the many mining communities of the Welsh valleys, Cwmaman quickly became a stronghold of Nonconformism.

Hen Fethel, also known as The Old Meeting House, was the first chapel built in 1773 high on the north side of the valley between Glanaman and Garnant. Pevsner describes the pulpit on a wine-glass stem as an "exceptional rarity".

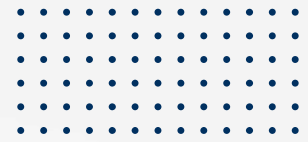


Hen Fethel is used just one day a year with Y Plygain, a traditional Welsh service held by candlelight every Christmas morning at 6.30am. In 1875 it was superseded by the New Bethel Chapel on the main road and stands on the boundary.



# COMMUNITY ASSETS

## CWMAMAN COMMUNITY CENTRE



The Cwmaman Community Centre is a dynamic hub for local activities, embodying the council's ethos of "Community Stronger Together."

Located off Cwmaman Road in Glanamman, behind Bryn Sion Chapel, the Centre offers a variety of amenities, including a community café, two workshops equipped with a kiln, a large meeting space, and a community pantry.

The Centre hosts a wide range of activities and services catering to all age groups, such as sewing clubs, exercise classes, and social events for seniors and families. With free parking available, the Centre is an accessible and welcoming space for residents to gather, learn, and engage in diverse activities, fostering a vibrant community spirit.

Room rental options are also available for both one-time events and regular meetings, supporting the needs of local groups and organisations.

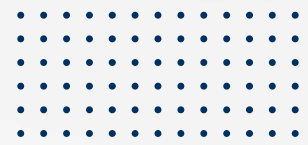
The Cwmaman Community Centre hosts a wide range of activities for adults and families throughout the year. Here are some of the regular events and classes offered:

Sewing Club  
Access to Art  
Yarn for a Yarn  
Pottery Throwing Classes  
Tai Chi  
Inside Out Project  
Cor Meibion Dyffryn Aman  
Over 60's Exercise Class  
Age is Just a Number  
Senior Citizens Group  
Lleisiau'r Cwm Female Choir  
Cardiac Rehabilitation

Cwmaman Community  
PantryWoodcarving  
Gardening Club  
Kinetic Martial Arts  
The Rock Project  
Toddler Group  
Art Club for Kids  
Inside Out Project – Group for children  
with additional needs and their parents  
Girlguides  
Youth Club  
Rainbows and Brownies

# COMMUNITY ASSETS

## CAFFI Y PAFILIWN CAFE



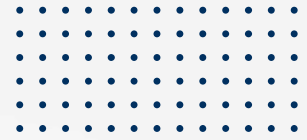
Nestled in the Bowls Pavilion at Cwmaman Park, Caffi Y Pafiliwn Café offers a delightful menu of affordable food, including plant-based and gluten-free options. This dog-friendly café welcomes all visitors, even providing a special menu for four-legged friends. Enhancing the park experience, the café offers bike hire services, making it a perfect pit-stop for both relaxation and adventure in the heart of the community.

Caffi Y Pafiliwn is more than just a café; it is a vibrant community hub that hosts numerous events and free activities for children and families throughout the spring and summer seasons. From fun-filled family days to creative workshops for kids, the café provides a welcoming space for community engagement and enjoyment. Its seasonal operation, open during the warmer months, allows visitors to enjoy the beautiful surroundings of Cwmaman Park while participating in a variety of community-focused events.

Although the café closes during the colder months, it remains a beloved destination during its operational period, contributing significantly to the social fabric of Cwmaman. With its warm atmosphere, community-centric activities, and dedication to inclusivity, Caffi Y Pafiliwn Café stands as a cornerstone of local life, fostering connections and creating lasting memories for all who visit.



# COMMUNITY ASSETS

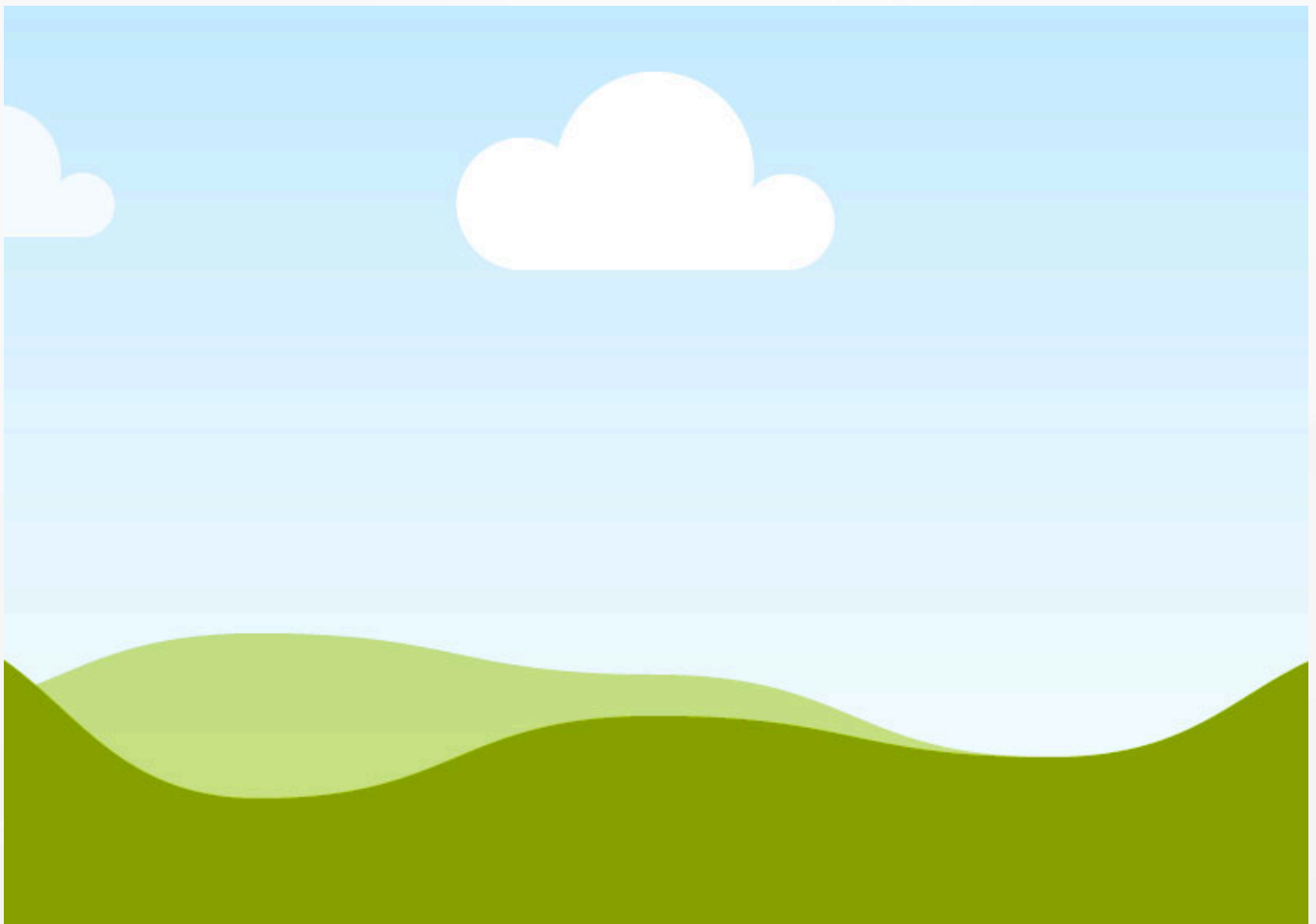


## CWMAMAN COMMUNITY CAFE

Located within the Cwmaman Community Centre, our Community Café is open all year round, providing a welcoming and inclusive space for all visitors. The café offers a menu of affordable and sustainable food options. By focusing on sustainability, the café not only supports local food systems but also promotes environmentally friendly practices within the community.

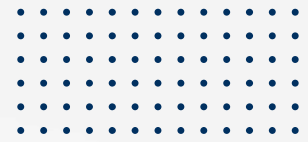
The Community Café serves as a versatile venue, catering for various events hosted at the Community Centre. Whether it's a community meeting, a social gathering, or a special event, the café provides delicious and wholesome food options that enhance the overall experience for attendees. Its commitment to affordability ensures that everyone in the community can enjoy nutritious meals without financial strain.

Through its operation, the Community Café plays a crucial role in fostering social connections, supporting local food initiatives, and enhancing the vibrant community life at the Cwmaman Community Centre.





# ACTIVITIES AND INITIATIVES



Cwmaman Town Council is committed to fostering a vibrant and supportive community through a variety of activities and initiatives that address the diverse needs of our residents. Our key programs are as follows;

## COMMUNITY FRIDAYS



Community Fridays is a groundbreaking initiative launched by Cwmaman Town Council to provide comprehensive support to the local community.

Every Friday, the Cwmaman Community Centre transforms into a one-stop support hub, bringing together various organisations under one roof. Essential services offered include the low-cost Food Pantry, the ETO Hub featuring refurbished furniture and electronic goods, and Hwb Bach y Gwlad providing housing and benefits support. Additionally, several third-sector organisations such as Home-Start Cymru, Age Cymru, and Shadows Depression Group have attended to offer specialised advice and information. This initiative aims to foster a stronger, more resilient community by making essential resources easily accessible to residents.

## CWMAMAN COMMUNITY PANTRY

The Community Pantry, located within the Cwmaman Community Centre, plays a vital role in supporting residents by providing low-cost quality food and emergency food parcels to those in need.

This service is designed to alleviate food insecurity and ensure that everyone in the community has access to nutritious food. The pantry is integrated with Community Fridays, enhancing the support network available to local residents.



## CLWB BOLA BACH



Clwb Bola Bach is a children's food club that operates across all our cafés, offering nutritious and low-cost food options to families in our communities. A dedicated Clwb Bola Bach menu is available in both cafés, ensuring that children and their families can enjoy healthy meals. Additionally, we host a specific Clwb Bola Bach after-school session every other Wednesday, where special meals and activities are provided for children and their families. This initiative aims to promote healthy eating habits among children while making family dining affordable and enjoyable.



# ACTIVITIES AND INITIATIVES

## COMMUNITY ENGAGEMENT



At Cwmaman Town Council, fostering strong community ties and partnerships is at the heart of our mission. We are proud to have established warm working relationships with a diverse array of community groups and organisations, each playing a vital role in enhancing the quality of life for our residents.

We collaborate closely with Cwmaman United Football Club and Amman United Rugby Club, supporting local sports and promoting physical activity among all age groups. These partnerships not only provide excellent opportunities for recreation but also help build a sense of pride and unity within our community.



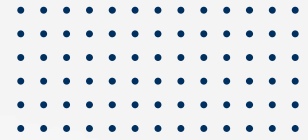
Our relationship with the Shadows Depression Group is crucial in addressing mental health issues, offering support and resources to those in need. We also work with the Amman Valley League of Friends and the Royal British Legion Cwmaman to support health and welfare initiatives, especially for our senior citizens and veterans.

Ysgol y Bedol is a key partner in our efforts to engage with young families and support educational initiatives. Through our collaboration, we strive to enhance the educational experiences and opportunities available to children in our community.



# ACTIVITIES AND INITIATIVES

## COMMUNITY ENGAGEMENT



The ETO Hub from Cwm Environmental plays a significant role in our efforts to promote sustainability and provide refurbished furniture and electronic goods at affordable prices. This initiative is an integral part of our Community Fridays, bringing essential services closer to our residents.

Our partnership with Innovation for Conservation Cymru (INCC), based behind our Caffi Y Pafiliwn Café, is instrumental in monitoring and enhancing biodiversity and conservation efforts within our community. Together, we work towards a more sustainable and environmentally friendly Cwmaman.



The Local Family Centre and the Senior Citizens Branch of Cwmaman are invaluable partners in our efforts to support families and elderly residents. These organisations provide essential services, activities, and support that enhance the well-being of these key community groups.

We are also proud to support creative endeavors through our collaboration with comic book illustrator and storyteller Scott Artis. His work enriches our cultural landscape and provides unique opportunities for artistic expression within Cwmaman.



By nurturing these partnerships and working collaboratively with these dedicated groups and organisations, Cwmaman Town Council continues to foster a vibrant, supportive, and engaged community.

# ACTIVITIES AND INITIATIVES

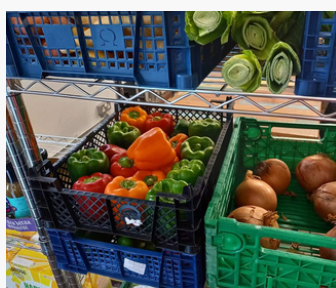


## COMMUNITY EVENTS

Cwmaman Town Council is dedicated to fostering a vibrant and engaging community through a variety of events and activities designed to bring residents together and celebrate our shared heritage.

Our annual calendar for 2023-24 was filled with events that catered to all age groups, promoting community spirit, well-being, and inclusivity. These events not only provided entertainment and leisure but also played a crucial role in strengthening community bonds and enhancing the quality of life for all residents.

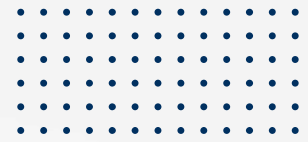
All community events organised and hosted by the Council were either free or low cost, ensuring that everyone, regardless of disability, family circumstances, or the rising cost of living, could participate and enjoy.





# ACTIVITIES AND INITIATIVES

## COMMUNITY EVENTS AND ACTIVITIES



### CWMAMAN COMMUNITY PICNIC

On May 7th, 2023, Cwmaman Town Council hosted the Cwmaman Community Picnic at Parc Cwmaman Park. From 2 PM to 5 PM, families gathered at Caffi Pafiliwn Café for an afternoon of fun and community bonding. The picnic featured a range of activities, including games, bouncy castles, craft activities, and live music. Every child received a free packed lunch, ensuring that all families could enjoy the event without financial burden. This free event highlighted our commitment to bringing the community together, providing enjoyable experiences for all ages, and fostering a sense of unity and celebration.

### HWYL Y CWM

The Hwyl y Cwm Family Fun sessions in August offered weekly activities for families at the Caffi Y Pafiliwn Café, from 2 PM to 4 PM. These sessions included bike rides, craft activities, and outdoor games, fostering a sense of community and outdoor recreation. All these activities were offered at minimal or no cost, ensuring accessibility for all families.





# ACTIVITIES AND INITIATIVES

## COMMUNITY EVENTS AND ACTIVITIES



### KIDS ART CLUB

The Kids Art Club, held every Tuesday from 4:15 PM to 5:30 PM at Cwmaman Community Centre, continues to provide a fantastic opportunity for children aged 5-10 to explore their creativity. Running in six-week blocks for a fee of £30, this club sparks children's imaginations through various artistic activities. Each session allows the young participants to delve into endless artistic possibilities, make new friends, and create wonderful memories. The Kids Art Club was an excellent platform for nurturing creativity and social skills in a supportive and fun environment.

### FAMILY LEGO FUN

Throughout the summer holidays of 2023, Cwmaman Town Council hosted Family Lego Fun at Cwmaman Community Café. This free event took place every Monday morning and provided a creative and fun-filled environment for families to come together and enjoy building with Lego. The sessions were designed to be inclusive and accessible, allowing families of all backgrounds to participate and engage in imaginative play. This event was a great success, fostering creativity and family bonding in a welcoming community space.



# ACTIVITIES AND INITIATIVES

## COMMUNITY EVENTS AND ACTIVITIES



### CRAFTY WEDNESDAYS

During the summer of 2023, the Cwmaman Community Centre held a series of craft workshops every Wednesday morning from 10 AM to 12 PM. The workshops, open to children aged 6-10, included a variety of creative activities such as making butterfly wings, unicorn puppets, fairy flowers, dragon pipes, flower dream catchers, and mosaic art. Each session was offered at an affordable price of £6.50 per child, making it accessible for families. These workshops provided a wonderful opportunity for children to explore their creativity and make new friends in a supportive and fun environment.



Join us for

## CRAFTY WEDNESDAYS!

CYNGOR TREF CWMAMAN TOWN COUNCIL

- Week 1 - Butterfly wings
- Week 2 - Unicorn Puppets
- Week 3 - Flower Fairies
- Week 4 - Dragon Puppets
- Week 5 - Flower Dream Catchers
- Week 6 - Mosaic Art

Every Wednesday morning throughout the Summer Holidays

Cwmaman Community Centre 10am till 12pm

Age 6-10  
£6.50 per child

Scan Here to book



CYNGOR TREF CWMAMAN TOWN COUNCIL

## HWYL Y CWM PRESENTS

# DJ DIAMOND

## DISCO DANCE PARTY

Festival Fancy Dress  
Caffi Pafiliwn Café, Cwmaman Park

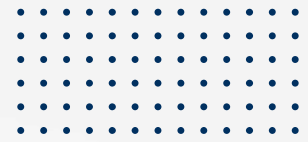
Actif Sports  
Cats Protection League  
Bouncy Castle  
Garnant Family Centre  
Lego Fun  
Craft activities

2PM TILL 4PM  
THURSDAY 24TH AUGUST  
FREE EVENT

### DJ DIAMOND DISCO DANCE PARTY

On August 24th, 2023, the Cwmaman Town Council hosted the DJ Diamond Disco Dance Party at Caffi Pafiliwn Café in Cwmaman Park. This free event, held from 2 PM to 4 PM, was a vibrant and energetic gathering that brought together families and community members for an afternoon of fun. The event featured DJ Diamond, who kept the atmosphere lively with music and dancing. Participants were encouraged to dress in festival fancy dress, adding to the spirit of the occasion.

# ACTIVITIES AND INITIATIVES



## COMMUNITY EVENTS

### BACK TO SCHOOL BASH

The Back to School Bash on September 2nd, 2023, was a spectacular end-of-summer event held at Caffi Y Pafiliwn Café in Parc Cwmaman Park. From 1 PM to 4 PM, families enjoyed a range of activities including craft sessions, a bouncy castle, Lego fun, face painting, and various games. The event was headlined by Mad Jay DJ, who kept the energy high with lively music and entertainment. This bash provided a wonderful opportunity for children to celebrate the new school year in a fun and supportive environment, all free of charge.

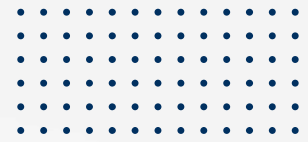


### MAD HATTER'S DAY

Mad Hatter's Day, held on October 8th, 2023, was a whimsical celebration at the Cwmaman Community Centre. The event featured tea and cake with our very own Mad Hatter, a decorate-your-own top hat station, a silly fancy dress competition, face painting, and a craft activity where children made their own flamingo wands. The highlight was the storytelling session by the Mad Hatter himself, which captivated both children and adults alike. This event successfully fostered community engagement and provided a fun-filled afternoon for families at no cost.



# ACTIVITIES AND INITIATIVES



## COMMUNITY EVENTS



### HARRY POTTER OUTDOOR CINEMA

Halloween at the Pavilion, held on October 29th, 2023, was a highlight of the autumn season. This event featured an outdoor cinema experience at Cwmaman Park MUGA, with a screening of "Harry Potter and the Philosopher's Stone." The festivities began at 2:30 PM with Halloween fun, including a costume contest with prizes for the best costumes. The movie screening started at 5:30 PM, allowing families to enjoy a magical film under the stars.

Although it was a rainy evening, this free event created a unique and memorable Halloween experience for the community, combining the excitement of trick-or-treating with the enchantment of an outdoor movie night.

### HALLOWEEN CRAFTY WEDNESDAYS

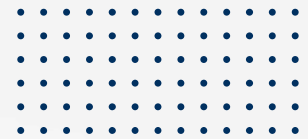
On November 1st, 2023, the Cwmaman Community Centre hosted a special Halloween-themed craft workshop. Children aged 6-10 were invited to join from 10 AM to 12 PM to make their own flying witch puppets. Priced at £6.50 per child, this event combined creativity with the festive spirit of Halloween, allowing children to create unique crafts while celebrating the spooky season. The workshop was well-received and added an exciting twist to the regular Crafty Wednesdays series.





# ACTIVITIES AND INITIATIVES

## COMMUNITY EVENTS AND ACTIVITIES



### CHRISTMAS LIGHT SWITCH ON AND FAYRE

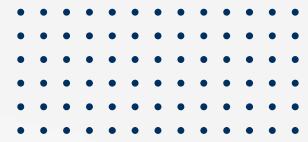
On December 3rd, 2023, the Cwmaman Community Centre was transformed into a festive wonderland for our annual Christmas Light Switch On and Fayre. The free event, which began at 3 PM, included a variety of stalls selling handmade crafts, festive foods, and unique gifts. The highlight of the evening was the official switching on of the Christmas lights, which illuminated the town with holiday cheer. This event not only celebrated the festive season but also supported local artisans and small businesses, reinforcing our commitment to promoting local enterprise.

### MAD JAY DJ CHILDRENS DISCO

On February 18th, 2024, Cwmaman Community Centre came alive with music and dancing featuring Mad Jay DJ. This exciting children's disco, held from 2 PM to 4 PM, was a free event designed to provide a lively and enjoyable experience for children and their families. The disco included fun activities and entertainment, ensuring a memorable afternoon filled with music, dance, and joy. This event exemplified our commitment to offering accessible and enjoyable activities for all members of the community.



# ACTIVITIES AND INITIATIVES



## PROJECTS AND IMPROVEMENTS

In 2023–24, Cwmaman Town Council made significant strides in the development of the 28-bed bunkhouse project, situated off station road in Glanamau

Funded via the 10 Towns funding in collaboration with Carmarthenshire County Council, the project aims to enhance local tourism and provide quality accommodations for various groups, including outdoor recreation enthusiasts, school groups, and tourists.

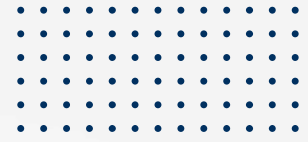
### FACILITY UPGRADES INCLUDED:

- Comprehensive renovation of bedrooms, bathrooms, and communal areas to ensure modern amenities and enhanced comfort for guests.
- Installation of energy-efficient appliances and LED lighting to promote sustainability.
- Improvement of accessibility features, including enhanced bathroom facilities and an adaptive bedroom to ensure inclusivity for people with disabilities.
- Creation of inviting communal spaces, such as lounges, communal kitchens, and dining areas, designed to foster social interaction among visitors.
- Implementation of decorative elements that reflect the narrative trails theme, promoting the local heritage and the Welsh language.
- Development of recreational and dining areas in the outdoor space to provide a comprehensive and enjoyable experience for guests.



**THE NEWLY RENOVATED 28-BED BUNKHOUSE WILL OPEN ITS DOORS TO GUESTS IN SUMMER 2024. THIS FACILITY WILL PROVIDE MODERN, COMFORTABLE ACCOMMODATION IN CWMAMAN.**

# ACTIVITIES AND INITIATIVES



## PROJECTS AND IMPROVEMENTS

In conjunction with the bunkhouse project, Cwmaman Town Council also focused on enhancing the local heritage trails. These trails are designed to provide an immersive experience that highlights the area's rich history, culture, and natural beauty.



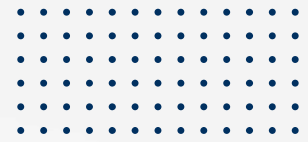
### THE PROJECT INCLUDES;

- Installation of informative and visually appealing signs that provide historical, cultural, and natural information about the trails.
- Incorporation of audio guides, QR codes, and mobile apps to offer additional stories and multimedia content, enriching the visitor experience.
- Development of trails around specific themes such as local history, wildlife, and cultural heritage to create a cohesive and memorable experience.
- Regular maintenance of trails to ensure clear signage, well-maintained pathways, and appropriate seating areas for a pleasant visitor experience.
- Collaboration with Innovation for Conservation Cymru (INCC) to monitor and enhance biodiversity and conservation efforts.
- Implementation of measures to protect and conserve the natural surroundings, promoting responsible visitor behavior and limiting trail erosion.
- The enhanced trails are expected to increase visitor numbers and footfall, benefiting local businesses and boosting the local economy.
- Educational opportunities for schools and community groups to learn about local history and the environment.
- Strengthened community pride and engagement through the preservation and celebration of local heritage.

**THROUGH THESE INITIATIVES, THE COUNCIL AIMS TO CREATE A VIBRANT AND THRIVING COMMUNITY THAT ATTRACTS VISITORS AND PROVIDES RESIDENTS WITH ENRICHING EXPERIENCES.**



# ACTIVITIES AND INITIATIVES



## COMMUNITY FRIDAYS: BRIDGING SERVICES AND STRENGTHENING COMMUNITY BONDS

Cwmaman Town Council proudly introduced "Community Fridays" in February 2024, a pioneering initiative aimed at enriching the lives of our residents by providing comprehensive support and fostering a sense of community. Hosted weekly at the Cwmaman Community Centre in Glanamau, with quarterly larger events, Community Fridays have quickly become a cornerstone of local engagement and assistance.



The inception of Community Fridays was marked by a successful launch event, drawing participation from a wide array of local organisations. This initiative consolidates crucial services under one roof, offering a one-stop support hub for our community members every Friday. At the heart of this program is the desire to facilitate easy access to essential resources, including the Food Pantry, the ETO Hub for affordable refurbished furniture and electronic goods, and Hwb Bach y Gwlad, which provides housing and benefits support.

### THE DIVERSE SERVICES AVAILABLE AT COMMUNITY FRIDAYS INCLUDE:

- **The Food Pantry:** A low-cost solution for families and individuals facing food insecurity, supported by generous donations from local businesses like Tesco and Co-op.
- **ETO Hub:** Partnering with Cwm Environmental, this hub supplies affordable, refurbished household items, helping residents equip their homes on a budget.
- **Hwb Bach y Gwlad:** Offering guidance on housing and social benefits, ensuring that residents receive the support they need to improve their living conditions.
- **Various third sector organisations** who provide support to our community.

During the launch, Community Fridays brought together representatives from various third-sector organisations. These collaborations underscore our council's commitment to a holistic approach in addressing the needs of every community member.

# ACHIEVEMENTS

## COMMUNITY FEEDBACK



*Fabulous event and atmosphere!  
Very festive and magical!  
Wedi mwynhau! Congratulations/  
Llongyfarchiadau!*

*The activities this year have been such a help to my family, they allowed us to spend time together as a family without the worry of having to save and the stress of travelling with my children. Thank you*

*The Thursday sessions were a big help to us last summer as cash was tight but it meant the girls had things to look forward to.*

*My eldest absolutely loved the Harry Potter and screening and is sincerely hoping you do another one!!*

*They both really enjoyed the end of summer party as it had something for all ages.*

*What a great time had shouting and dancing with the performers and the children so enjoyed time out*

*The community picnic was such a fantastic event, all the children in the community were fed and everyone was catered for.*

*The back to school big bash was excellent! Thanks for letting us be a part of it.*






# ACHIEVEMENTS

## COMPLETED PROJECTS


### GREEN INFRASTRUCTURE

This year, Cwmaman Town Council completed the Green Infrastructure project which bolstered our community's environmental sustainability and engagement. Here are some highlights from our completed initiatives included in that funding:

 Cyngor Tref Cwmaman Town Council  
Just now · 🌐

🌱 Our fantastic litter picking volunteers have been making a difference by keeping our community clean and beautiful. This initiative was made possible with the support of the Green Infrastructure project. Join our dedicated team every Friday morning and be a part of this positive change! Get in touch for more information. [Facebook](#) [Twitter](#) #CleanCommunity #greeninitiative  
The European Agricultural Fund for Rural Development: Europe Investing in Rural Areas



 Cyngor Tref Cwmaman Town Council  
Just now · 🌐

🌱 Have you visited our community garden yet? Located at the back of the Glanam Community Centre, this green oasis is open to all. Thanks to the Green Infrastructure project, local volunteers and school children can explore the joys of planting and gardening in this sustainable space. Come and be a part of our green community! 🌿  
#CommunityGarden #GreenThumb  
The European Agricultural Fund for Rural Development: Europe Investing in Rural Areas



 5m · 🌐

🌱 Earlier this year, our environmental fruit trees in Ysgol y Bedol with the enthusiasm of the Green Infrastructure project provided the opportunity for empowering the next generation to connect with nature and appreciate the importance of trees in our environment. The European Agricultural Fund for Rural Development: Europe Investing in Rural Areas



 Cyngor Tref Cwmaman Town Council  
23m · 🌐

🌱 Over the last 3 years, Cwmaman Town Council has collaborated with the Green Infrastructure project, made possible through ENRaW funding. Take a look at these photos showcasing the incredible progress we've made in Cwmaman with the help of this funding. Together, we are building a greener and more sustainable community! 🌿  
#GreenCwmaman #SustainableDevelopment  
The European Agricultural Fund for Rural Development: Europe Investing in Rural Areas



...en working hard to install raised  
...ol for the children to use. Thanks  
...is initiative has become a reality,  
...storing a love for gardening  
...structure #SustainableEducation  
...al Development: Europe





# ACHEIVEMENTS

## COMPLETED PROJECTS

### NURTURE AND NOURISH (WARM SPACES)PROJECT

In the winter of 2023, the "Nurture and Nourish" project was actively engaged in supporting the community. The project aimed to enhance community well-being by coordinating a variety of engaging activities and initiatives to establish warm and inclusive spaces, especially during the challenging times of the cost of living crisis.

This endeavor effectively brought together community members of different age groups, promoting social interaction and collaborative creativity in a supportive environment, while also providing a sanctuary for those in need of support.



The range of activities offered was also aimed at removing the stigma associated with using such services, making it a normal and enjoyable part of community life, ensuring that no one needed to feel isolated or unsupported during these difficult times.

# CHALLENGES AND RESPONSES

## KEY CHALLENGES FACED IN 2023/24

### AN ERROR IN THE 2023-24 PRECEPT DEMAND.

A significant challenge faced by the council was the administrative error related to the precept calculation for the financial year 2023-2024, which resulted in an overcharge of £9,191.

The council took immediate steps to rectify the mistake and ensured transparency by publicly acknowledging the error and outlining the corrective measures taken. This incident highlighted the need for more rigorous checks and balances within the council's financial administration to prevent similar occurrences in the future and these were immediately put in place.

This period was challenging for everyone involved, and officers took immediate action upon discovering the error. While it was not possible to reverse the mistake, measures were implemented throughout the year to address and rectify the issue in the 2024-25 budget.

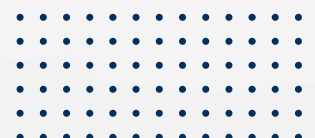
This led to a adjustment and reduction in the precept for the subsequent year to correct the overcharge. The Band D property tax rate was adjusted from £230.71 to £219.60, thereby providing an annual savings of £11.11 to the residents.

While this rebate was favorably received as it allowed residents to retain more money during challenging economic times, the council and officers were mindful that the error itself posed issues of trust and accountability within the community.

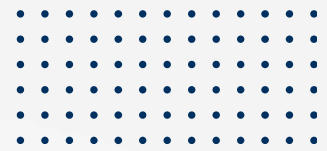
The council's decision to freeze the precept at the corrected rate, despite the general trend of rising precepts in the region due to the cost-of-living crisis, reflected a commitment to financial stability and community support. However, this also meant that in the coming year the council must manage its resources more efficiently, balancing reduced income with the need to maintain and potentially expand community services.

This challenge in financial administration underscored the council's ongoing efforts to adapt and respond to internal and external pressures.

Addressing these issues effectively is crucial for maintaining community trust and ensuring the sustainability of council operations and initiatives.



# FUTURE OUTLOOK



## UPCOMING PROJECTS AND INITIATIVES

Cwmaman Town Council is committed to continually improving the quality of life in our community through a variety of upcoming projects and initiatives.

**Our focus remains on enhancing our community spaces, promoting sustainability, and fostering a vibrant community culture.**

## COMMUNITY DEVELOPMENT AND ENHANCEMENT PROJECTS

### Bunkhouse and Community Hall

The development of a 28-bed bunkhouse is set to boost local tourism and provide a sustainable revenue stream for future community projects. This facility will cater to visitors looking to explore the natural beauty of our region, enhancing our local economy. Additionally, plans to upgrade our community hall will ensure it continues to serve as a central hub for community activities and events.

### Beautification Initiatives

Our council is investing in beautification projects across Cwmaman. This includes the installation of flower planters and railing planters, as well as the strategic placement of hanging baskets. These initiatives aim to enhance the aesthetic appeal of our town and create a welcoming atmosphere for both residents and visitors.

## ENVIRONMENTAL AND RECREATIONAL IMPROVEMENTS

### Park Cleaning and Upgrades

An ongoing priority for the council is the maintenance and improvement of our local parks. Starting this year, we plan to initiate a phased project focusing on cleaning and upgrading facilities within our 11 parks, tackling them one by one. These efforts will ensure that these valuable community assets remain safe, clean, and enjoyable for all residents.

### Additional Recycling Bins

To promote environmental sustainability and facilitate effective waste management, additional recycling bins will be deployed to key locations within the community. This initiative is part of our broader strategy to encourage recycling and reduce the environmental footprint of our town.



# FUTURE OUTLOOK

## UPCOMING PROJECTS AND INITIATIVES

### COMMUNITY ENGAGEMENT AND SUPPORT INITIATIVES

#### Community Support and Events

As we progress through 2024, we aim to continue offering a wide range of activities and events for local families, while also maintaining our support services for those in need.

#### Christmas 2024

For Christmas 2024, we hope to bring a Christmas Lantern Parade to Cwmaman, a festive celebration designed to light up our community with warmth, creativity, and holiday spirit. This new event aims to showcase the rich heritage and culture of Cwmaman and rural Carmarthenshire, fostering a vibrant community gathering that celebrates our local traditions and communal spirit.

We're planning for the parade to commence at Raven Flower Park, illuminated by large, professionally crafted lanterns, and wind its way through the heart of our town. To make this event truly special, we plan to invite all community groups to join in on pre-event lantern-making workshops. These workshops are not only a fun, creative activity but also an opportunity for everyone to contribute to the beauty of the parade.



Performances by local brass bands, choirs, and circus skills entertainers will enrich the festive atmosphere, making it a memorable night for people of all ages. The parade will conclude at Caffi Y Pafiliwn Café/Cwmamman Park, where the celebration will continue with food stalls, refreshments, and entertainment, ensuring the night is enjoyable for the entire family.

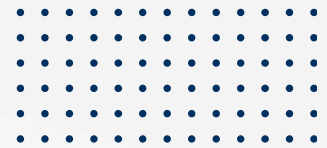
We hope that the Christmas Lantern Parade will become an annual highlight that attracts visitors not only from Cwmaman but from surrounding areas as well.

This event is a stepping stone towards establishing Cwmaman as a vibrant community and destination within Carmarthenshire.



# FUTURE OUTLOOK

## PRIORITIES AND STRATEGIC GOALS



As we move forward, Cwmaman Town Council remains committed to a range of strategic priorities aimed at enhancing community infrastructure, increasing engagement, and improving the overall quality of life for our residents. The council is dedicated to delivering projects that not only meet the current needs of our community but also lay the groundwork for sustainable growth and enrichment.

### COMMUNITY INFRASTRUCTURE AND FACILITIES

#### Launch of the Bunkhouse and Neuadd y Bannau

A major priority for the coming year is the promotion of our new 28-bed bunkhouse, alongside the opening of Neuadd y Bannau, a new community hall converted from the former workshop.

Neuadd y Bannau, situated next to the bunkhouse, will be available for hire, offering a versatile space for events and activities that complement the lodging facilities, thus enhancing our community's appeal to visitors and residents alike.

#### Public Toilets Enhancements

The council plans to refurbish the public toilets both internally and externally, improving their aesthetics and functionality. Enhancements will include a fresh coat of paint, the installation of a clock, and the addition of flower baskets, all aimed at making these facilities more welcoming and pleasant for public use.

#### Revitalisation of Community Squares

Efforts will be made to revitalize the town's squares, transforming them into vibrant, functional public spaces that can accommodate a variety of public events and markets, thus enhancing the communal and aesthetic appeal of our town.

### ENHANCING COMMUNITY ENGAGEMENT AND FACILITIES

#### Development of Workshops at the Community Centre

The workshops at the Community Centre will be enhanced to create additional facilities for community use. These enhancements will provide space and resources for a range of activities and programs, further supporting our community's educational and recreational needs.

### VOLUNTEERING AND COMMUNITY PARTICIPATION

#### Volunteering Opportunities

We will continue to focus on expanding volunteering opportunities, recognizing the essential role volunteers play in the success of our community projects and events. Increased volunteer engagement is crucial for maintaining and expanding our community services and events.



## CYNGOR TREF CWMAMAN TOWN COUNCIL



Cwmaman Community Centre,  
5 High Steet, Glanamman SA18 1DX



01269 823299



[clerk@cwmamantc.org](mailto:clerk@cwmamantc.org)



[www.cwmamantc.org](http://www.cwmamantc.org)

