



YN GWASANAETHU/SERVING
GARNANT & GLANAMAN

CWMAMAN TOWN COUNCIL ANNUAL REPORT

COMMUNITY STRONGER TOGETHER



SERVING THE VILLAGES OF



**Glanaman
a Garnant**

2024-25
ANNUAL REPORT



TABLE OF CONTENTS

WELCOME - FROM MAYOR TONY JONES

INFORMATION ABOUT US

YOUR COUNCILLORS

YOUR OFFICERS

**WHAT YOUR TOWN COUNCIL DOES
(AND DOESN'T DO)**

YOUR CWMAMAN

OUR PRIORITIES FOR 2024-25

ACHIEVEMENTS

FINANCIAL & EXPENDITURE

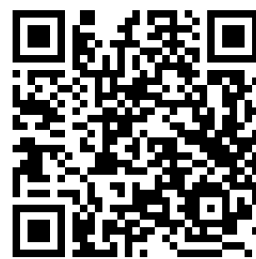
COMMUNITY ASSETS

ACTIVITIES AND INITIATIVES

CHALLENGES AND RESPONSES

FUTURE OUTLOOK

FOLLOW US ON SOCIAL MEDIA



JOIN OUR MAILING LIST



INTRODUCTION

Welcome to the Annual Report of Cwmaman Town Council for 2024-25.

This report covers the period from 1 April 2024 to 31 March 2025 and is prepared in accordance with Section 52 of the Local Government and Elections (Wales) Act 2021. It sets out the Council's priorities, activities and achievements during the year and reflects our commitment to openness, accountability and service to the people of Cwmaman.

During 2024-25, the Council focused on strengthening community life through the development of local groups and services based at the Community Centre. While prolonged wet weather during the summer prevented some planned outdoor events from taking place, we adapted our approach and continued to provide family activities and events indoors, ensuring that residents still had opportunities to meet, take part and enjoy time together.

Throughout the year, we also worked to strengthen relationships with community groups and local partners. This helped us to better support local activity, respond to community needs and build stronger foundations for future collaboration across Cwmaman.

A significant milestone at the end of the financial year was the opening of Bwncws y Bannau, providing a valuable new community asset and creating opportunities to support visitors, local activity and the wider area.

This report provides an overview of the Council's work during 2024-25, including the challenges we faced, how we responded to them, and the progress we made in supporting our community. We hope it offers residents a clear picture of the Council's work over the year and of our ongoing commitment to the well-being and future of Cwmaman.



WELCOME

From Tony Jones, Mayor of Cwmaman 24-25

It gives me great pleasure to introduce Cwmaman Town Council's Annual Report for 2024-25.

As Mayor of Cwmaman, I am proud to present this report, which reflects the Council's work over the past year to support our community, strengthen local relationships and continue developing services for residents.



During 2024-25, the Council focused on strengthening community life through the development of groups, services and activities centred around the Community Centre. Although the wet summer weather meant that some planned outdoor events could not go ahead, we continued to provide family events and activities indoors, helping residents to stay connected and involved.

We also worked to strengthen relationships with community groups and local organisations, recognising the importance of partnership working in supporting the needs of our area. I am particularly pleased that the year ended with the opening of Bwncws y Bannau, an important new community asset for Cwmaman.

I would like to thank everyone who has contributed to the Council's work during the year, including councillors, staff, volunteers and local groups. Your support plays a vital role in helping our community to thrive.

I hope you find this report informative and that it provides a clear picture of the Council's activities and achievements during 2024-25.

INFORMATION ABOUT US

Cwmaman Town Council serves the vibrant communities of Garnant and Glanamau, representing over 4500 residents. Established in 1974, our Council is committed to enhancing community life and maintaining transparent governance.

The Council is made up of 15 members that represent the community on a ward basis. These members make decisions on a range of services and activities which support the local community and liaise with Carmarthenshire Council when other issues of concern or interest arise.

Cwmaman Town Council has a range of responsibilities and powers that, depending on financial and other resources, enable the development and improvement of facilities and services for both residents and visitors. The Council:

- Collaborates with various organisations, community groups, and the community to ensure the best outcomes for our residents and the maintenance of services.
- Advocates on behalf of local residents, requesting that Carmarthenshire Council and other statutory bodies meet their duties and responsibilities in ways that satisfy the needs of Cwmaman residents.
- Is committed to the seven goals outlined in the Well-being of Future Generations Act (Wales) 2015, striving for sustainable development to improve economic, social, environmental, and cultural well-being, aiming for a Wales that is prosperous, resilient, healthier, more equal, cohesive, globally responsible, and culturally vibrant where the Welsh language prospers.
- Maintains and enhances the environment.
- Considers and responds to planning applications.
- Engages with consultations by statutory bodies at both national and local levels, always considering the impact on local residents.
- Applies for grants or sources of funding that support the vision and aims of the Town Council

The Council's work is supported by committees that meet to address specific matters. Each committee has defined terms of reference and membership approved by the Town Council and reviewed periodically.

Our committees include:

Park Assets and Environment Committee

Finance, Audit, and Projects Committee

Policy Committee

Personnel Committee/Appeals Committee



INFORMATION ABOUT US

Meetings

Council meetings are held monthly on the last Monday evening of each month. These hybrid meetings are conducted both in person at the Community Centre board room and remotely via Microsoft Teams.

The public is welcome to attend all meetings, with opportunities provided for public participation. Meetings will be closed to the public only when discussing confidential matters.

Staffing

Cwmaman Town Council employs six officers, including:

Town Clerk: Louise Dent

Deputy Clerk: Marissa Sweeney Aris

Responsible Financial Officer: Olamide Togun

Facilities Officer: Jonathan Kemp

Community Liaison Officer: Ian Llewelyn

Community Caretaker: Donal Bendrey

Additionally, we have a café supervisor and casual café staff working across our two cafés.

The Town Clerk acts as the Chief Officer of the Council, managing the staff and addressing any council-related matters. Residents are encouraged to contact the Clerk for assistance and support.

Accountability

The Town Council has adopted a Member's Code of Conduct and maintains a register of interests for each member.

Councillors must declare any interests at the start of each meeting, which are then recorded in the minutes.

The Town Council undergoes annual audits by internal auditors (KLG Services) and external auditors (Wales Audit Office) to ensure transparency and accountability.

External Membership

The Town Council greatly benefits from its membership in

One Voice Wales, the main representative body for community and town councils in Wales. One Voice Wales provides legal advice, service improvement guidance, training, policy advice, and networking opportunities through conferences and monthly newsletters.

The Clerk and Deputy Clerk are members of the Society of Local Council Clerks (SLCC), which offers information, best practices, training courses, and conferences. Additionally, the Town Council elects members to other external bodies, such as the Governing Body of Ysgol Y Bedol.

Website

Information about the Town Council, including meeting agendas, minutes, policies, and news, is available on our website: www.cwmaman.org.uk



YOUR COUNCILLORS

In Wales, approximately 8,000 town and community councillors act on behalf of residents who elect them, serving as the voice of the people in shaping how public services are delivered and developed.

Cwmaman Town Council has 15 Councillors representing a range of political opinions. All Councillors are bound by a Code of Conduct and are expected to uphold the Nolan Principles of Public Life, which include:-



These principles guide our councillors in their commitment to serving you, ensuring a transparent and accountable local government.

YOUR COUNCILLORS

Meet our team of councillors, your partners in building a stronger, more connected Cwmaman.

At Cwmaman Town Council, our strength lies in the commitment and passion of our councillors. These individuals are not just representatives; they are your neighbours, friends, and advocates, working tirelessly to make our community a better place for everyone.

Pystyll Llwyd Ward



Cllr Tony Jones (Mayor)
Labour
Pystyll Llwyd

tony.jones
@cwmamantc.org



Cllr Pauline Barker
Independent
Pystyll Llwyd

pauline.barker
@cwmamantc.org



Cllr Karen Davison
Labour
Pystyll Llwyd

kal.davison
@cwmamantc.org



Cllr Catherine Poulter
Labour
Pystyll Llwyd

catherine.poulter
@cwmamantc.org



Cllr Carl Richards
Independent
Pystyll Llwyd

carl.richards
@cwmamantc.org

Twyn Ward



Cllr. Ashley Butcher
Independent
Twyn

ashley.butcher
@cwmamantc.org



Cllr Kevin Madge
Labour
Twyn

kevin.madge
@cwmamantc.org



Cllr Nigel Jerrett
Plaid Cymru
Tircoed

nigel.jerrett
@cwmamantc.org



Cllr. David Williams
Labour
Tircoed

david.williams
@cwmamantc.org



Cllr Emyr Rees
Independent
Tircoed

emyr.rees
@cwmamantc.org

Tircoed Ward

Grenig Ward



Cllr Gordon Jones (Deputy Mayor)
Labour
Grenig

gordon.jones
@cwmamantc.org



Cllr David Jenkins
Plaid Cymru
Grenig

david.jenkins
@cwmamantc.org



Cllr Vyvyan Radford Smith
Labour
Grenig

vyvyan.radfordsmith
@cwmamantc.org



Cllr Wayne Erasmus
Gwlad
Grenig

wayne.erasmus
@cwmamantc.org



Cllr Matthew Wyatt
Labour
Grenig

matthew.wyatt
@cwmamantc.org

YOUR OFFICERS

Cwmaman Town Council has undergone a period of significant transformation with the formation of a new staffing team in 2023/24.

This change has marked a pivotal point for the Council, allowing us to enhance our operational capabilities and better serve the community. We have successfully developed a dedicated and dynamic team committed to improving the services offered by the Council.



Louise Dent
Town Clerk



Marissa Sweeney Aris
Deputy Town Clerk



Olamide Togun
Responsible
Finance Officer



Jonathan Kemp
Facilities Officer



Ian Llewelyn
Community Liaison
Officer



Donal Bendrey
Community
Caretaker

At the beginning of the year, our staff set forth to achieve several key objectives, demonstrating their dedication to the community's well-being and development:

Bringing the Community Together

Creating Core Memories for Local Families

Achieving Best Practice

Ensuring Clear and Transparent Governance

Serving the Community to the Best of Our Ability

The formation of our new staffing team has been a significant milestone, and we are proud of the progress we have made. With a shared vision and collaborative spirit, we are poised to continue making positive strides in our service to the community.

WHAT YOUR TOWN COUNCIL DOES...

As one of more than 730 Community Councils in Wales, Cwmaman Town Council is deeply rooted in its commitment to serving the community.

Here's a glimpse of what we do:

COMMUNITY EMPOWERMENT

Through influence, enablement, and support, we actively encourage and assist community groups to thrive.

QUALITY OF LIFE IMPROVEMENT

We strive to enhance the quality of life in our local community through various initiatives and projects.

COMMUNITY EVENTS

Bringing neighbours, families and generations together, we organise a variety of community events, fostering a sense of unity and shared experiences among our residents.

REPRESENTATION AND ADVOCACY

We stand as a voice for the local community, ensuring that the concerns and aspirations of our residents are heard and addressed.

TAILORED SERVICES

With a keen understanding of local needs, we strive to provide essential services that contribute to the well-being and vitality of our community.

WHAT YOUR TOWN COUNCIL DOES...

We take pride in managing and overseeing various places and services that are integral to the fabric of our community.

Currently, these include:

- Cwmaman Community Centre
- Bwncws y Bannau (formerly Glanaman Resource Centre)
- Neuadd Y Bannau (formerly the Community hall/Workshop)
- The Bowls Pavilion
- Caffi Y Pafiliwn Café
- Cwmaman Park
- Raven Park
- Bishops Road Park
- Penyrallt Park
- Maes y Bedol Park
- Twyn Park
- Gelli Werdd Play Park
- Penpound Park
- Tirycoed Park
- Grenig Park
- Bryn Rhos Park
- The Multi-Use Games Area
- Golwg Yr Aman Carpark (opposite Ysgol y Bedol)
- Public Convenience (Glanaman Square)

AND WHAT WE DON'T DO.....

A town council is not responsible for the following:

- Roads/Highways/Planning
- Waste/Rubbish Collections
- Council Housing and Benefits
- Education and Schools

We are also not currently responsible for Gelli Werdd country park and Parc Golwg yr Aman, which are currently under the jurisdiction of Carmarthenshire County Council.

At Cwmaman Town Council, we continue to uphold the values set forth by Acts of the Senedd or the UK Parliament, ensuring that our community flourishes and remains a vibrant place to call home.

FINANCE AND EXPENDITURE

FINANCIAL SUMMARY 2024/2025

The Council Precept is the main source of Council income and represents the amount of council tax paid by households in Cwmaman that is allocated to the Town Council. Town and community councils receive 6% of the overall council tax demand.

The annual precept of £219.60 (per Band D household) raised a total of £359,925.01 for the Town Council during 2024/25 (the Town Council does not receive anything from business rates).

It also received income from the provision of its services such as:

○ Grant applications: £32,128

● Community café: £16,839

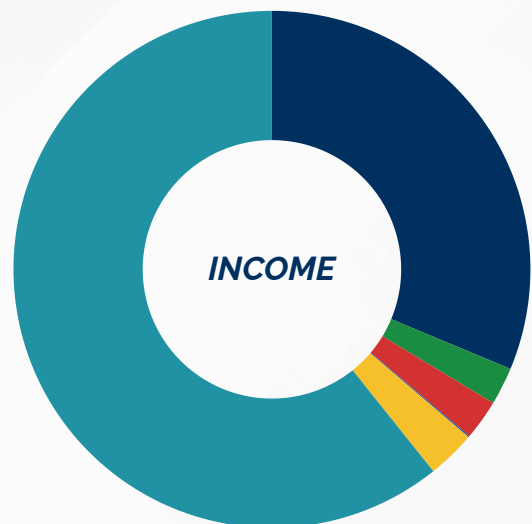
● Caffi Y Pavilion: £12,999

● Multi use games area: £850

● Community Centre: £16,413

○ Precept £359,925.01

Other income received was £12,772 giving total income for 2024/25 of £451,926



During 2024/25, Council expenditure (including staffing costs) was:

● Community Parks - £32,279

● Christmas Lighting - £15,216

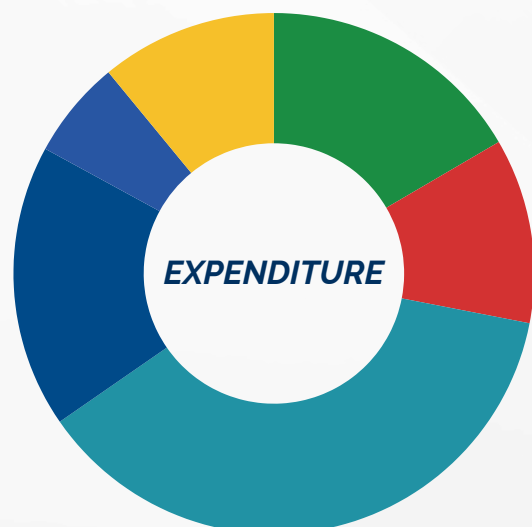
● Community Centre - £36,610

○ Community Cafe's - £19,439

● Community Grants - £5,159

● Community Events - £2,765

Other expenditure (including staffing costs) was £404,929 giving total expenditure for 2024/25 of £ 516,397



FINANCE AND EXPENDITURE

SMALL GRANTS AND DONATIONS

At Cwmaman Town Council, we are committed to supporting projects that contribute positively to our community. Through our Grant Awarding Policy, we provide financial assistance to community organisations and individuals who are dedicated to enhancing the quality of life, improving our environment, providing essential services, and promoting Cwmaman in positive and impactful ways. Our goal is to ensure that both community groups and individuals have the support they need to make significant contributions to our community and beyond.

| Organisation | Amount | Date |
|---------------------------|-----------|----------|
| Garnant Family Centre | £702.83 | Jun 2024 |
| The Hangout | £500.00 | Jun 2024 |
| Shadows Depression Group | £1,540.00 | Jun 2024 |
| Cwmaman Bowls Club | £500.00 | Jul 2024 |
| Cwmamman United AFC Women | £637.50 | Jan 2025 |
| Ysgol Y Bedol PTA | £680.00 | Nov 2024 |

In 2024-25, we donated a total of £5159.00 to support community groups, community projects and third sectors supporting our residents.

YOUR CWMAMAN

THE VILLAGES OF GARNANT AND GLANAMAN

- OUR HISTORY

Cwmaman is a community in east Carmarthenshire comprising the two neighbouring villages of Garnant and Glanamman. Cwmaman's modern semi-rural landscape disguises the impact of the industrial revolution. A once remote and sparsely populated agricultural area underwent a dramatic transformation in the mid-18th century with the advent of coal mining at Brynllloi in Glanamman in 1757. Small coal workings proliferated in the first half of the 19th century.

(THE ORIGINAL BRYNLLLOI FARM AT GLANAMMAN, PICTURED ABOVE, IS SAID TO HAVE DATED BACK TO AT LEAST 1494 AND WAS USED AS A RELIGIOUS MEETING PLACE FOR WORSHIP AS EARLY AS 1727. IN THE LATE 18TH CENTURY, A SUNDAY SCHOOL WAS HELD THERE. IT WAS DEMOLISHED IN 1906)



(GELLI CEIDRIM COLLIERY C.1910)

But everything changed with the arrival of the "Llanelli Railway" in 1840. It meant that coal could be exported on an industrial scale through Llanelli docks. The company's decision to build two stations at Garnant and Glanamman encouraged the two halves of Cwmaman to develop their own identities.

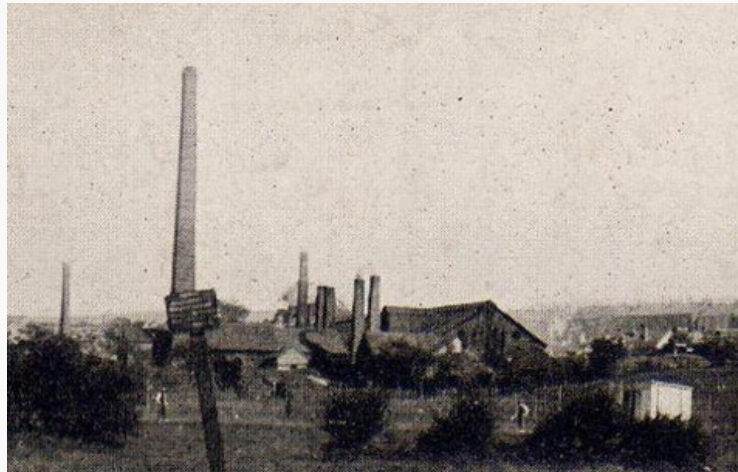
Taking its name from the emblem of the Dynevor family the Raven Colliery in Garnant was operating by 1854 and opened a new shaft in 1907. By World War I, it was employing 450 men. The Raven colliery eventually closed in 1936 and the site is now the Raven Industrial Park. Half a mile to the west another large colliery dominated the southern hillside - the Gellyceidrim Number 1 slant, opened in 1891. At its peak in 1926, 750 men were employed at the colliery, and it had an output of 500 tons a day. The mine finally closed in 1957. Coal mining continued sporadically since then, most notably at an open cast mine which extracted 2,000 tons per week between 1988 and 1992. The site is now the popular Garnant Park Golf Club.

YOUR CWMAMAN

THE VILLAGES OF GARNANT AND GLANAMAN - OUR HISTORY

ECONOMY

Traditionally the economy was based on coalmining with some dairy farming, but the mines have closed, and farms have moved from milk production to beef-farming. Other industries sprang up in the valley during the 19th century, including the Amman Tinplate Works between 1883 and 1932 which was turned into Parc Golwg Yr Aman.



CULTURE



In towns and villages across south Wales, where industry and agriculture existed side by side, the outpouring of cultural activity in all forms was remarkable. Literature, poetry, song, music and theatre thrived and Cwmaman was no different.

Cwmaman's many chapels were ideal venues for vibrant community events, such as grand concerts, dramatic productions with local eisteddfodau commonly held (even on Christmas Day).

Across the Amman Valley, through the Sunday School and the Band of Hope (Gobeithlu) the chapels made a huge contribution to the cultural wealth of the district, giving excellent grounding for the choral tradition.

YOUR CWMAMAN

THE VILLAGES OF GARNANT AND GLANAMAN - OUR HISTORY

The Workmen's Hall and the Garnant Constitutional Club were both typical symbols of the social side of life in a traditional South Wales mining community.



"CWMAMAN OPERATIC SOCIETY'S PERFORMANCE OF 'THE NEW MOON' AT THE WORKMEN'S HALL, GARNANT IN MARCH 1957

The Workmen's Hall was for many years a popular destination for live entertainment as well as a thriving cinema. Its huge stage area, one of the largest in Wales, attracted a wide range of performers including a travelling circus complete with an elephant and performing horses, the London Symphony Orchestra, the prestigious Ballet Rambert from Paris as well as a number of live BBC radio broadcasts.

SPORT

Sport also flourished in Cwmaman with rugby, football, cricket and boxing being followed by the growing population, helping to forge a community identity amongst families which had come to the Amman Valley from many parts of Wales and beyond.



AMMAN UNITED RUGBY TEAM (DATE UNKNOWN)

Over the years many Welsh international rugby players have honed their skills playing for Amman United RFC before donning the red jersey of Wales. In recent years the most notable exponent of the game has been Shane Williams, a man who continues to take great pride in his local community. Cwmaman United Football Club have also met with considerable success.

YOUR CWMAMAN

THE VILLAGES OF GARNANT AND GLANAMAN - OUR HISTORY

EDUCATION

The community remains a stronghold of the Welsh language.

Three local schools, Ysgol y Twyn, Ysgol Gynradd y Garnant and Ysgol Gynradd Glanaman, were merged to form Ysgol y Bedol at the confluence of the three rivers in the Twyn area. This primary school for ages 2–11 was opened in 2005. Ysgol y Bedol is a category A, or Welsh medium school.



RELIGIOUS SITES

As with the many mining communities of the Welsh valleys, Cwmaman quickly became a stronghold of Nonconformism.

Hen Fethel, also known as The Old Meeting House, was the first chapel built in 1773 high on the north side of the valley between Glanaman and Garnant. Pevsner describes the pulpit on a wine-glass stem as an "exceptional rarity".



Hen Fethel is used just one day a year with Y Plygain, a traditional Welsh service held by candlelight every Christmas morning at 6.30am. In 1875 it was superseded by the New Bethel Chapel on the main road and stands on the boundary between Glanaman and Garnant.

COMMUNITY ASSETS

CWMAMAN COMMUNITY CENTRE



The Cwmaman Community Centre is a dynamic hub for local activities, embodying the council's ethos of "Community Stronger Together."

Located off Cwmaman Road in Glanamman, behind Bryn Seion Chapel, the Centre offers a variety of amenities, including a community café, two workshops equipped with a kiln, a large meeting space, and a community pantry.

The Centre hosts a wide range of activities and services catering to all age groups, such as sewing clubs, exercise classes, and social events for seniors and families. With free parking available, the Centre is an accessible and welcoming space for residents to gather, learn, and engage in diverse activities, fostering a vibrant community spirit. Room rental options are also available for both one-off events and regular meetings, supporting the needs of local groups and organisations.

The Cwmaman Community Centre hosts a wide range of activities for adults and families throughout the year. Here are some of the regular events and classes offered:

Sewing Club
Access to Art
Yarn for a Yarn
Pottery Throwing Classes
Tai Chi
Cor Meibion Dyffryn Aman
Over 60's Exercise Class
Age is Just a Number
Senior Citizens Group
Lleisiau'r Cwm Female Choir

Cwmaman Community Pantry
Woodcarving
Kinetic Martial Arts
The Rock Project
Toddler Group
Art Club for Kids
Girl Guides
Youth Club
Rainbows
Cardiac Rehabilitation

COMMUNITY ASSETS

CWMAMAN COMMUNITY CAFE



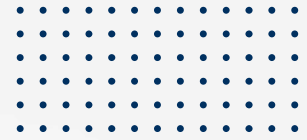
Located within the Cwmaman Community Centre, our Community Café is open all year round, providing a welcoming and inclusive space for all visitors. The café offers a menu of affordable and sustainable food options. By focusing on sustainability, the café not only supports local food systems but also promotes environmentally friendly practices within the community.

The Community Café serves as a versatile venue, catering for various events hosted at the Community Centre. Whether it's a community meeting, a social gathering, or a special event, the café provides delicious and wholesome food options that enhance the overall experience for attendees. Its commitment to affordability ensures that everyone in the community can enjoy nutritious meals without financial strain.

Through its operation, the Community Café plays a crucial role in fostering social connections, supporting local food initiatives, and enhancing the vibrant community life at the Cwmaman Community Centre.



ACTIVITIES AND INITIATIVES



Cwmaman Town Council is committed to fostering a vibrant and supportive community through a variety of activities and initiatives that address the diverse needs of our residents. Our key programs are as follows;

COMMUNITY FRIDAYS

Community Fridays is a groundbreaking initiative launched by Cwmaman Town Council to provide comprehensive support to the local community.

Every Friday, the Cwmaman Community Centre transforms into a one-stop support hub, bringing together various organisations under one roof. Essential services offered include the low-cost Food Pantry, the ETO Hub featuring refurbished furniture and electronic goods, and Hwb Bach y Wlad providing housing and benefits support. Additionally, several third-sector organisations such as Home-Start Cymru, Age Cymru and Shadows Depression Group have attended to offer specialised advice and information. This initiative aims to foster a stronger, more resilient community by making essential resources easily accessible to residents.

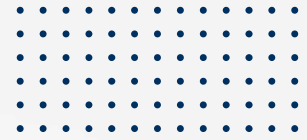


CWMAMAN COMMUNITY PANTRY

The Community Pantry, located within the Cwmaman Community Centre, plays a vital role in supporting residents by providing low-cost quality food and emergency food parcels to those in need. This service is designed to alleviate food insecurity and ensure that everyone in the community has access to nutritious food. The pantry is integrated with Community Fridays, enhancing the support network available to local residents.



ACTIVITIES AND INITIATIVES



COMMUNITY ENGAGEMENT

At Cwmaman Town Council, fostering strong community ties and partnerships is at the heart of our mission. We are proud to have established warm working relationships with a diverse array of community groups and organisations, each playing a vital role in enhancing the quality of life for our residents.

We collaborate closely with Cwmaman United Football Club and Amman United Rugby Club, supporting local sports and promoting physical activity among all age groups.



Ysgol y Bedol is a key partner in our efforts to engage with young families and support educational initiatives. Through our collaboration, we strive to enhance the educational experiences and opportunities available to children in our community.

The ETO Hub from Cwm Environmental provide refurbished furniture and electronic goods at affordable prices. This initiative is an integral part of our Community Fridays, bringing essential services closer to our residents.



Our partnership with Innovation for Conservation Cymru (INCC), based behind our Caffi Y Pafiliwn Café, is instrumental in monitoring and enhancing biodiversity and conservation efforts within our community.

The Local Family Centre and the Senior Citizens Branch of Cwmaman are invaluable partners in our efforts to support families and elderly residents. These organisations provide essential services, activities, and support that enhance the well-being of these key community groups.



The Military Veterans Club Cymru have been valuable partners in helping us to support veterans in our community and the surrounding areas.

PRIORITIES

During 2024-25, Cwmaman Town Council focused on a number of key priorities aimed at supporting community well-being, strengthening local services and improving the area for residents and visitors.

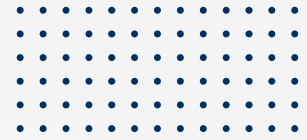
Our priorities during the year were to:

- Strengthen the role of the Community Centre as a hub for local groups, services and community activity.
- Provide affordable and inclusive events and activities for residents of all ages, helping to support community life and well-being.
- Work more closely with local groups, volunteers and partner organisations to strengthen relationships and support community-led activity.
- Improve the appearance, cleanliness and presentation of public spaces across the community.
- Maintain parks, outdoor spaces and other community assets, while responding to local issues and challenges as they arose.
- Complete the development and opening of Bwncws y Bannau as a new community and visitor facility for the area.

These priorities reflect the main areas of work undertaken by the Council during the year and provide the basis for the activities and achievements set out in the following sections of this report.



ACTIVITIES AND INITIATIVES



COMMUNITY EVENTS

Cwmaman Town Council supports a range of events, activities and community initiatives designed to bring residents together and strengthen community life.

During 2024-25, the Council adapted its programme in response to prolonged wet weather during the summer months, which affected the delivery of some planned outdoor activities. To ensure that residents still had opportunities to come together, the Council continued to provide family events and activities at the Community Centre in a welcoming and accessible environment.

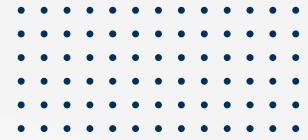
The year also saw a growing focus on developing community groups and services based at the Community Centre, while strengthening relationships with local organisations and partners. Through this work, the Council helped support greater community involvement and reinforced the role of the Centre as an important local hub.

Together, these events and activities helped to maintain community connections, support well-being and encourage inclusion across all age groups. The Council remained committed to keeping activities free or low cost wherever possible, helping to ensure that residents could participate regardless of disability, family circumstances or the ongoing pressures of the rising cost of living.



ACTIVITIES AND INITIATIVES

COMMUNITY EVENTS AND ACTIVITIES



CYNGOR TREF CWMAMAN TOWN COUNCIL

GWENER GYMUNEDOL

COMMUNITY FRIDAYS

CGSG - CAWS

pobl

Oes gennych chi ddi-ddordeb mewn gwirfoddoli yn eich cymuned?
Are you interested in volunteering in your community?

Rydym yn dathlu Wythnos Gwirfoddolwyr!
We are celebrating Volunteers Week!

Ymunwch â ni ar 7 Mehefin i ddathlu wythnos gwirfoddolwyr a chael gwybod am gyfleoedd gwirfoddoli yng Nghwmaman.

Join us on 7th June to celebrate volunteers week and find out about volunteering opportunities in Cwmaman.

Dydd Gwener
Friday
7FED O FEHEFIN
7TH OF JUNE
10AM - 2PM

Ganolfan Cymunedol
Cwmaman
Community Centre
SA18 1DX

CYMUNED YN GRYFACH GYDA'N GILYDD
COMMUNITY STRONGER TOGETHER

VOLUNTEERS WEEK EVENT COMMUNITY ENGAGEMENT AND PARTICIPATION

As part of Volunteers Week, the Council hosted a community volunteering event at Cwmaman Community Centre, bringing together local organisations, partners and residents to celebrate and promote volunteering across the area.

The event was a great success, with over 20 organisations in attendance showcasing a wide range of volunteer opportunities. Residents were able to speak directly with groups, find out how to get involved and learn more about the support and activities available within their community.

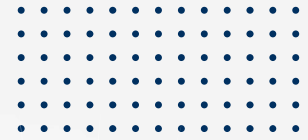
The day included a varied programme of activities and demonstrations, including practical sessions from Cwm Environmental's ETO on Tour team, health and wellbeing support from partner organisations, and interactive workshops such as craft sessions and exercise classes. The event was officially opened by Scott Artus, who also engaged attendees throughout the day with creative sessions.

The event created a welcoming and inclusive space for people of all ages to attend, connect and take part. It also provided an opportunity for local organisations to network, share knowledge and strengthen links with one another.

Feedback from attendees and organisations was very positive, with strong engagement throughout the day. The event highlighted both the strength of the voluntary sector locally and the appetite within the community to get involved and support one another. This event forms part of the Council's wider commitment to community engagement, wellbeing and supporting a strong, connected and resilient community.



ACTIVITIES AND INITIATIVES



COMMUNITY EVENTS AND ACTIVITIES

AMMAN VALLEY HOSPITAL FÊTE SUPPORTING COMMUNITY WELLBEING

The Council supported and promoted the Amman Valley Hospital Fête, delivered in collaboration with the Amman Valley Hospital League of Friends. The event brought together residents, community groups and local organisations for a day of fundraising and community activity in support of local healthcare services.



The fête was well attended and created a welcoming and positive atmosphere, with a range of stalls, activities and entertainment for all ages. It provided an opportunity for residents to come together while raising valuable funds to support the hospital and enhance patient experience.

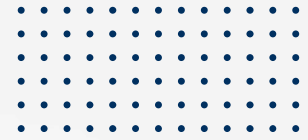
The event highlighted the important role of the Amman Valley Hospital League of Friends and the strength of community-led initiatives in supporting local health services. It also demonstrated the willingness of residents and organisations to work together for the benefit of the wider community.

The Council was pleased to support this collaborative event and recognises the importance of maintaining strong links with local health partners. The success of the fête reflects a shared commitment to community wellbeing and continued support for essential local services.



ACTIVITIES AND INITIATIVES

COMMUNITY EVENTS AND ACTIVITIES



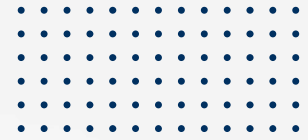
Cwmaman Town Council continued its partnership working with Connecting Carmarthenshire to deliver targeted support for residents through a Winter Warmth and Wellness event held on 17 October.

The event brought together a range of organisations and services to provide practical advice, information and direct support to residents in Cwmaman and the surrounding areas. This included guidance on staying warm and well during the winter months, access to local support services, and opportunities for residents to engage directly with organisations in a supportive and informal setting.

The event was well received and provided a valuable opportunity to reach residents who may not otherwise access support. It also strengthened partnership working and improved awareness of the services available locally. This initiative contributes to the Council's wider priorities around wellbeing, inclusion and community resilience, particularly in the context of ongoing cost of living pressures.



ACTIVITIES AND INITIATIVES



ENHANCING OUR LOCAL ENVIRONMENT

During 2024-25, Cwmaman Town Council continued to invest in the appearance and upkeep of the local environment to help create a cleaner, more attractive and welcoming community for residents and visitors.

As part of this work, the Council introduced 15 flower pots and 10 over-railing planters across the area, helping to brighten public spaces and add colour throughout the community. These improvements were intended not only to enhance the visual appearance of Cwmaman, but also to contribute to local pride and a more pleasant environment for everyone.

The Council also secured support through the Carmarthenshire County Council 10 Towns Revitalising Town Centres Grant, which enabled improvements to the public toilet.

This included a full external repaint, the addition of new flower baskets, and the installation of a clock, helping to improve both the appearance and overall presentation of the facility.

In addition, the Council arranged for all of its parks, outdoor spaces and bus stops to be professionally steam cleaned during the year. This work helped to maintain cleanliness, improve presentation and support the ongoing care of important community assets. Together, these improvements formed part of the Council's wider commitment to maintaining public spaces, enhancing the local environment and ensuring that Cwmaman remains a tidy, attractive and welcoming place to live and visit.

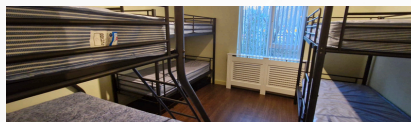
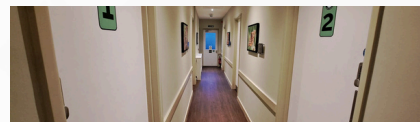


ACHEIVEMENTS

THE OPENING OF BWNCWS Y BANNAU

During 2024-25, Cwmaman Town Council celebrated the opening of Bwncws y Bannau, a newly refurbished 28-bed bunkhouse providing modern and affordable group accommodation in the heart of the Amman Valley, close to the western edge of Bannau Brycheiniog (Brecon Beacons) National Park.

The facility was developed to offer flexible and accessible accommodation for a wide range of users, including schools, youth groups, outdoor organisations, businesses, community groups and families. As well as supporting visitors to the area, Bwncws y Bannau also provides an affordable local option for residents wishing to accommodate guests or host group events.



The bunkhouse includes modern communal areas, a fully equipped kitchen and flexible room layouts, creating a practical and welcoming base for educational visits, outdoor activities, team-building stays and community use. Its location, close to walking routes and outdoor attractions, makes it a valuable asset both for the local community and for visitors to the area.

Following its opening, Bwncws y Bannau was showcased to a range of groups and organisations, who were highly impressed by the quality of the facilities and the opportunities it offers. This generated strong interest and led to a number of bookings during the year, helping to establish the bunkhouse as an important new community and visitor facility.

The opening of Bwncws y Bannau represents a significant achievement for the Council and an investment in the future of the area, supporting community use, local tourism and wider economic activity.

ACHEIVEMENTS

CHRISTMAS LANTERN EVENT

In December 2024, Cwmaman Town Council held its annual Christmas Celebration and Lights Event, bringing residents together to mark the start of the festive season.

The event had originally been planned for the previous week but, due to the impact of Storm Darragh, it was necessary to postpone it at short notice and rearrange it quickly for the following week. Despite this disruption, the Council was pleased to be able to continue with the celebration and provide a festive community event for local families.



Held at Cwmaman Community Centre, the event included a range of activities and entertainment for all ages, including giant lantern puppets, samba drummers, craft activities, a festive tabletop sale and Santa's grotto. Community lantern-making workshops also took place as part of the celebrations, helping residents to get involved and contribute to the event.

Although the severe weather created significant challenges in the lead-up to the celebration, the event remained an important opportunity to bring the community together, support festive activity locally and create an enjoyable experience for children and families.

ACHEIVEMENTS

CHRISTMAS LANTERN EVENT



CHALLENGES AND RESPONSES

STORM DARRAGH IN DECEMBER 2024

One of the challenges faced during 2024-25 was the severe storm in December 2024, which had a major impact across the community.

As a result of the weather conditions, the Council had to make the difficult decision to postpone its Christmas event at very short notice and rearrange it quickly for the following week. While this was disappointing for everyone involved, the Council acted promptly to ensure the event could still go ahead safely at the earliest possible opportunity.



The storm also caused widespread disruption and damage across the community. Council caretakers responded throughout the period by carrying out inspections, identifying hazards and dealing with the immediate effects of the storm where possible. Early assessments identified fallen trees, damaged fencing, branches on pathways, flooding and debris in a number of locations, including Raven Park, Golwg Yr Aman and the Bowls Pavilion area. Residents were advised to avoid affected locations until they could be made safe.



The impact on the wider community was considerable, with many residents left without power for several days. In these circumstances, the Council's role included responding to damage affecting its own sites, monitoring local conditions and keeping residents informed through public updates.

Although the storm created significant disruption, it also highlighted the importance of local resilience and the value of having responsive staff on the ground. The Council is grateful to its caretakers and to the community for their patience and cooperation during a difficult period.

FUTURE OUTLOOK

UPCOMING PROJECTS AND INITIATIVES

Looking ahead, Cwmaman Town Council will continue to build on the work carried out during 2024-25, with a focus on strengthening community connections, supporting local groups and improving the appearance and environment of the area.

A key priority for the year ahead will be to further develop relationships with third sector organisations and work more collaboratively with them to bring services, support and opportunities directly into the community. The Council will continue to use its facilities and partnerships to help connect residents with local organisations and encourage greater community involvement.

The Council also intends to continue delivering community events and activities that bring residents together and support well-being, inclusion and community spirit. Building on the progress made during the year, we will seek to provide opportunities for people of all ages to participate in local events and make use of community spaces.

In addition, the Council plans to build on existing environmental improvements by adding to the current flower displays and continuing its programme of cleaning and enhancement works across the community. This will help to ensure that Cwmaman remains a clean, attractive and welcoming place for residents and visitors alike.

Through these priorities, the Council aims to continue strengthening community life, improving local spaces and working in partnership for the benefit of Cwmaman.





CYNGOR TREF CWMAMAN TOWN COUNCIL



Cwmaman Community Centre,
5 High Street, Glanaman SA18 1DX



01269 823299



clerk@cwmamantc.org



www.cwmaman.org.uk